



**FINEST & RAREST WINES**  
FEATURING A SUPERB COLLECTION  
OF BURGUNDY, RHONE & CHAMPAGNE

*King Street · 10 November 2016*



**CHRISTIE'S**

## INTERNATIONAL WINE DEPARTMENT & AUCTION CALENDAR

### INTERNATIONAL HEAD OF DEPARTMENT

David Elswood  
Tel: +44 (0)20 7752 3366

### HEAD OF DEPARTMENT

**ASIA**  
Simon Tam  
Tel: +852 2978 6765

**LONDON**  
Chris Munro  
Tel: +44 (0)20 7752 3140

**NORTH AMERICA**  
Per Holmberg  
Tel: +1 212 484 4841

### SENIOR CONSULTANTS

Michael Broadbent M.W.  
Anthony Hanson M.W.  
Tel: +44 (0)20 7752 3314

### WORLDWIDE

**AMSTERDAM**  
Edwin Vos  
Tel: +31 (0)20 575 5208

**BELGIUM**  
Fiona Morrison, M.W.  
Tel: +32 (0)55 31 17 59

**BORDEAUX**  
Bill Blatch  
Tel: +33 (0)777 965 565

**BEIJING**  
Austin Zhang  
Tel: +86 10 8572 7927

**GENEVA**  
Agathe de Saint Céran  
Tel: +41(0) 22 31 917 60

**HONG KONG**  
Simon Tam  
Tim Triptree  
Fai Lo  
Tiffany Po  
Tel: +852 2978 6761

**LONDON**  
Carolyn Holmes  
Peter Mansell  
Charles Foley  
Duncan McEuen (Consultant)  
Tel: +44 (0)20 7752 3302

**LOS ANGELES**  
Scott Torrence  
Tel: +1 310 385 2625

**NEW YORK**  
Per Holmberg  
Richard Young  
Noah May  
Layla Khabiri  
Scott Torrence  
Tel: +1 212 636 2270

**PARIS**  
Edwin Vos  
Agathe de Saint Céran  
Clément Huvet  
Tel: + 33(0) 1 40 76 83 88

### BUSINESS MANAGERS

**FRANCE**  
Marie Faiola  
Tel: +33 (0)1 40 76 83 56

**HONG KONG**  
Cindy Tse  
Tel: +852 2978 6759

**LONDON**  
Laure Camboulives  
Tel: +44 (0)20 7752 3252  
Saara Thomas  
(Head of Sale Management)  
Tel: +44 (0)20 7389 2383

**NEW YORK**  
Devon Elovitz  
(Business Coordinator)  
Tel: +1 212 641 5776

11/10/16

### AUCTION CALENDAR 2016

To include your property in these sales please consign ten weeks before the sale date. Contact the specialists or representative office for further information.

**20 OCTOBER**  
**FINE AND RARE WINES**  
LONDON, KING STREET

**20 OCTOBER**  
**EVENING SALE -**  
**MAGNIFICENCE IN FOCUS**  
NEW YORK

**21 OCTOBER**  
**FINE WINES AND SPIRITS**  
**FEATURING THE EXCEPTIONAL**  
**COLLECTION OF JAY STEIN**  
HONG KONG

**1-15 NOVEMBER**  
**WINE ONLINE/NYC**

**10 NOVEMBER**  
**FINE AND RARE WINES**  
LONDON, KING STREET

**13 NOVEMBER**  
**FINE WINES**  
GENEVA

**1- 15 DECEMBER**  
**WINE ONLINE/LDN**

**25 NOVEMBER**  
**FINE AND RARE WINES**  
HONG KONG

**26 NOVEMBER**  
**FINE AND RARE WINES**  
HONG KONG

**8 DECEMBER**  
**FINE AND RARE WINES**  
LONDON, KING STREET

**9 DECEMBER**  
**FINE AND RARE WINES**  
NEW YORK



David Elswood



Chris Munro

**SPECIALISTS**



Peter Mansell



Carolyn Holmes



Edwin Vos



Charles Foley

**SALE COORDINATOR**



Jennifer Sutton

**SPECIALISTS**

Chris Munro, *Head of Sale*  
Tel: +44 (0)20 7752 3140  
Carolyn Holmes  
Tel: +44 (0)20 7752 3360  
Peter Mansell  
Tel: +44 (0)20 7389 2171  
Edwin Vos  
Tel: +44 (0)20 7752 3302  
Charles Foley  
Tel: +44 (0)20 7752 3092

**SALE COORDINATOR**

Jennifer Sutton  
jsutton@christies.com  
Tel: +44 (0)20 7752 3302

**EMAIL**

First initial followed by last name@christies.com  
(eg. Chris Munro = cmunro@christies.com.)  
For general enquiries about this auction, email  
should be addressed to the sale coordinator.

Front cover: Lot 117  
Back cover: Lot 113

**FINEST AND RAREST WINES**  
**FEATURING A SUPERB COLLECTION**  
**OF BURGUNDY, RHONE & CHAMPAGNE**

**THURSDAY 10 NOVEMBER 2016**

**AUCTION**

Thursday 10 November 2016  
at 10.30 am Lots 1-370  
8 King Street, St. James's  
London SW1Y 6QT

**AUCTION CODE AND NUMBER**

In sending absentee bids or making  
enquiries, this sale should be referred  
to as **TAIN-12234**

**AUCTIONEERS**

David Elswood, Carolyn Holmes & Peter Mansell

**SERVICES**

**ABSENTEE AND  
TELEPHONE BIDS**

Tel: +44 (0)20 7389 2658  
Fax: +44 (0)20 7930 8870

**AUCTION RESULTS**

Tel: +44 (0)20 7839 9060  
christies.com

**CLIENT SERVICES**

Tel: +44 (0)20 7839 9060  
Fax: +44 (0)20 7389 2869  
Email: info@christies.com

**POST-SALE SERVICES**

Annika Hasselgren  
Post-Sale Coordinator  
Payment, Shipping, and Collection  
Tel: +44 (0)20 7752 3200  
Fax: +44 (0)20 7752 3300  
Email: PostSaleUK@christies.com

**CONDITIONS OF SALE**

This auction is subject to Important Notices,  
Conditions of Sale and to Reserves

**BUYING AT CHRISTIE'S**

For an overview of the process,  
see the Buying at Christie's section.

[10]

**christies.com**

**COPYRIGHT NOTICE**

No part of this catalogue may be reproduced,  
stored in a retrieval system or transmitted by any  
form or by any means, electronic, mechanical,  
photocopying, recording or otherwise, without  
the prior written permission of Christie's.  
© COPYRIGHT, CHRISTIE, MANSON &  
WOODS LTD. (2016)



Browse this auction and view  
real-time results on your iPhone,  
iPod Touch, iPad and Android

These auctions feature



*Bid live in Christie's salerooms worldwide*  
register at christies.com

**CHRISTIE'S**

View catalogues and leave bids online  
at christies.com

## TURNING WINE INTO WATER

### MIXED LOTS FROM THE 2016 DECANTER WORLD WINE AWARDS, SOLD TO BENEFIT **WaterAid**

The following lots 1 to 83 are offered on behalf of Decanter Magazine and are drawn from the sample bottles submitted to their 2016 World Wine Awards. The proceeds will be donated in full to benefit the international charity, **WaterAid**, who are dedicated to the provision of domestic water, sanitation and hygiene education across Africa and Asia. Their work is fundamental; over a billion people do not have access to safe water in these areas.

To find out more about the great work of **WaterAid**, go to [www.wateraid.org/uk](http://www.wateraid.org/uk) or you can meet the team at the Decanter Fine Wine Encounter on 12th and 13th November [www.decanter.com/wine-events](http://www.decanter.com/wine-events).

Each case contains 12 different bottles from the region or country indicated and all are packed in new Christie's cartons following inspection and selection by Decanter staff. Vintages range mainly from 2010-2015. All are drawn from the 'Price Band C, £15 and above' of the 2016 Decanter World Wine Awards (full results of which are available at [www.decanter.com](http://www.decanter.com))

*There will be a chance to taste a range of samples on the morning of the sale, however a detailed listing will not be available*

#### Port

*A selection of Ports including Vintage, Late-Bottled-Vintage and exceptional Tawny.*

1	24 bottles	per lot	£480-600 €540-670
2	24	"	
3	24	"	
4	24	"	
5	24	"	

#### Red Bordeaux

*A selection of Red Bordeaux from the finest communes: Médoc, Saint-Estèphe, Saint-Julien, Margaux, Graves, Pessac-Léognan, Pomerol and Saint Emilion.*

6	48 bottles	per lot	£500-600 €560-670
7	48	"	
8	48	"	
9	48	"	
10	48	"	
11	48	"	

#### Red Bordeaux

*A selection of Red Bordeaux from the finest communes: Médoc, Saint-Estèphe, Saint-Julien, Margaux, Graves, Pessac-Léognan, Pomerol and Saint Emilion.*

12	60 bottles	per lot	£600-700 €680-780
----	------------	---------	----------------------

#### Red Burgundy

*From the finest appellations including: Nuits-Saint-Georges, Gevrey Chambertin, Chambolle-Musigny, Pommard and Volnay*

13	36 bottles	per lot	£500-700 €560-780
14	36	"	
15	36	"	

#### White Burgundy

*From the finest appellations including Chassagne-Montrachet, Puligny-Montrachet, Meursault, Saint-Aubin, and Chablis.*

16	36 bottles	per lot	£450-600 €510-670
17	36	"	
18	36	"	
19	36	"	
20	36	"	
21	36	"	

#### Rhône Valley Red

*From the finest communes: Gigondas, Châteauneuf-du-Pape and a small selection of Northern Rhône such as Hermitage, Côte Rôtie and Cornas.*

22	36 bottles	per lot	£400-500 €450-560
23	36	"	
24	36	"	

#### Loire White Wines

*Mixed cases of Sancerre & Pouilly Fumé*

25	48 bottles	per lot	£400-500 €450-560
26	48	"	

**Spanish Red Wines**

*Some classic names from Spain including Gran Reserva, Reserva and Crianza Rioja, Priorat, Toro and Ribera del Duero*

27	48 bottles	per lot £450-550 €510-620
28	48 "	

**Spanish Red Wines**

*Some classic names from Spain including Gran Reserva, Reserva, and Crianza Rioja, Priorat, Toro and Ribera del Duero*

29	60 bottles	per lot £500-700 €560-780
30	60 "	
31	60 "	
32	60 "	
33	60 "	
34	60 "	
35	60 "	
36	60 "	

**Rioja**

*Mixed Rioja*

37	48 bottles	per lot £450-600 €510-670
----	------------	------------------------------

**Rioja**

*Mixed Rioja*

38	60 bottles	per lot £500-700 €560-780
----	------------	------------------------------

**Italian Red Wines**

*From the premier regions of Piedmont, Tuscany, Veneto, mixed cases including; Barolo, Chianti Classico and Amarone.*

39	60 bottles	per lot £500-700 €560-780
40	60 "	
41	60 "	
42	60 "	
43	60 "	
44	60 "	
45	60 "	
46	60 "	
47	60 "	
48	60 "	
49	60 "	
50	60 "	
51	60 "	
52	60 "	
53	60 "	
54	60 "	
55	60 "	
56	60 "	
57	60 "	
58	60 "	

**Champagne**

*A selection of Vintage and Non-Vintage Champagne from small growers to Grande Marques*

59	36 bottles	per lot £550-650 €620-730
60	36 "	
61	36 "	
62	36 "	
63	36 "	

**Champagne**

*A selection of Vintage and Non-Vintage wine from small growers to Grande Marques*

64	48 bottles	per lot £700-900 €790-1,000
65	48 "	
66	48 "	
67	48 "	
68	48 "	
69	48 "	
70	48 "	
71	48 "	
72	48 "	
73	48 "	
74	48 "	
75	48 "	
76	48 "	
77	48 "	
78	48 "	
79	48 "	

**Champagne**

*A selection of Vintage and Non-Vintage wine from small growers to Grande Marques*

80	60 bottles	per lot £900-1,100 €1,100-1,200
81	60 "	
82	60 "	
83	60 "	

## DOMAINE DE LA ROMANEE-CONTI

'Romanée-Conti,' as the local proverb goes, 'is the central pearl of the Burgundian necklace.' This minuscule vineyard gives its name to the most famous

Domaine in the world, commonly referred to as 'D.R.C.' or, more reverentially, as The Domaine.

This pearl, this small jewel, just under 5 acres, was coveted by a famous collector of jewelry, Madame de Pompadour, but she was out bid by the Prince de Conti, hence the name. The King's minister won against the King's mistress! In 1868 the vineyard passed to the de Villaine family and is still, today, managed by Aubert de Villaine.

It never fails to astonish me that the strips of vines which stretch only a modest number of meters up the very gentle slopes from the outskirts of an equally modest, indeed remarkably rural rambling of village Vosne, are capable of producing wines of such world class quality.

The strips of vines cultivated by the Domaine include La Tâche (nearly 15 acres), also a monopole or wholly owned vineyard, 13 acres of Romanée-Saint-Vivant--most elegant wine and, I think, fractionally underrated and over 8 acres of the more substantial Richebourg. Then, strictly speaking not in Vosne-Romanée but over the wall, literally uphill from Clos Vougeot, are 8 acres of the superb Grands-Echézeaux and just over 11 of Echézeaux.

One thing strikes me forcibly: these five sites prove unquestionably that the French notion of terroir is not a fancy figment of Gallic imagination for the differences between each of the wines is marked, so consistent. Yet all five of the D.R.C. burgundies are made, traditionally, in the same cellars from grapes of the same variety, Pinot Noir. Romanée-Conti itself has a unique concentration, La Tâche has a different sort of intensity, each having a superb yet vividly contrasting bouquet. Richebourg, next door, has a broader character, and so on. So what produces those differences: slight variations in subsoil, slope and drainage, fractionally, virtually imperceptible microclimate. Who knows? But fermented identically, the final wines are different.

The Price? Well, of course, there is no getting away from the bare facts: the production is so small and the world demand so high that even opening prices make one wince. But this is nothing new. The finest wines have always been the prerogative of the seriously rich or fortunately privileged, from fat Prelates to their Royal Masters.

Another thing I have discovered. They keep so well. The 1937 Romanée-Conti is still magnificent, the 1945 La Tâche has an almost pristine depth of colour and fragrance. The wine opens up in the mouth fanning out like a peacock's tail. Even curious vintages like 1951 and 1954 can be surprisingly good. And do they change! Sometimes unconvincingly when young, they take on colour and depth. They are not wines for an instant sniff; they open up in the glass.

**Michael Broadbent**, M.W.  
Senior Consultant



**A SUPERB COLLECTION OF FINE BURGUNDY  
RHONE AND CHAMPAGNE**

We are proud to offer an extensive range of the finest wines from Burgundy, the Rhône, Champagne and Italy. The collection, lots 84 to 151, represents a small offering from one of the world's most extensive wine collections. Highlights include a fabulous range of Burgundy including rare magnums of La Tâche and Richebourg, DRC from the famed 1969 vintage, a comprehensive range of Montrachet from Domaines Marc Colin and Leflaive. The collection also includes superb Rhône with two ultra-rare bottles of Hermitage La Chapelle 1937.

Lying in Corsham, Wiltshire (Octavian)

*Offered in bond, available duty-paid, except lots 93, 108, 109, 144, 145 which are duty-paid only*

**Domaine de la Romanée-Conti La Tâche 1969**

*Grand Cru, Côte de Nuits*

*Not in original wooden case. Bottle no's 000598, 000600, 000601. Leroy slip labels. Slightly corroded capsules, slightly damaged. Bin-soiled labels, one slightly damaged. Levels: One 3cms, one 4cms, one 5cms below base of corks*

+84 3 magnums per lot £9,000-15,000  
€11,000-17,000

**Domaine de la Romanée-Conti, Richebourg 1969**

*Grand Cru, Côte de Nuits*

*Bottle no's 000333, 000336, 000337, 000338. Two corroded capsules. Bin-soiled labels, one damaged. Leroy slip-labels. Levels: two 3cms, one 4cms, one 5cms below base of corks*

+85 4 magnums per lot £12,000-16,000  
€14,000-18,000

**Domaine de la Romanée-Conti, Echézeaux 1991**

*Grand Cru, Côte de Nuits*

*In original wooden six-bottle, banded cases*

+86 12 bottles per lot £6,000-8,000  
€6,800-9,000

**Domaine de la Romanée-Conti, La Tâche 1993**

*Grand Cru, Côte de Nuits*

*In original wooden cases. Slightly damaged labels*

+87 12 bottles per lot £12,000-16,000  
€14,000-18,000

+88 12 ..

**Domaine de la Romanée-Conti, Richebourg 1993**

*Grand Cru, Côte de Nuits*

*In original wooden case. Good appearance*

+89 12 bottles per lot £10,000-15,000  
€12,000-17,000

**Domaine de la Romanée-Conti**

**Richebourg 1993**

*Bin-soiled, damaged and stained label*

(1)

**La Tâche 1996**

*One damaged capsule. Slightly bin-soiled labels*

(2)

**Richebourg 1996**

*Slightly bin-soiled labels*

(3)

**La Tâche 2005**

*One damaged capsule. Slightly bin-soiled labels*

(2)

+90 8 bottles per lot £11,000-14,000  
€13,000-16,000

**Domaine de la Romanée-Conti, Montrachet 2006**

*Grand Cru, Côte de Beaune*

*Slightly bin-soiled label*

+91 1 bottle per lot £1,500-2,000  
€1,700-2,200

**Domaine de la Romanée-Conti, Montrachet 2007**

*Grand Cru, Côte de Beaune*

*Good appearance*

+92 1 bottle per lot £2,000-2,500  
€2,300-2,800





MONOPOLE  
1993

MONOPOLE  
1993

MONOPOLE  
1993

MONOPOLE  
1993

SOCIÉTÉ CIVILE DU DOMAINE DE LA ROMANÉE-CONTRE  
PROPRIÉTAIRE A VOSNE-ROMANÉE (COTE-D'OR) FRANCE

DOMAINE DE LA ROMANÉE-CONTRE  
VOSNE-ROMANÉE (COTE-D'OR) FRANCE

DOMAINE DE LA ROMANÉE-CONTRE  
VOSNE-ROMANÉE (COTE-D'OR) FRANCE

DOMAINE DE LA ROMANÉE-CONTRE  
VOSNE-ROMANÉE (COTE-D'OR) FRANCE

TÂCHE

TÂCHE

TÂCHE

LA TÂCHE

APPELLATION LA TÂCHE CONTRÔLÉE

17.971 Bouteilles Récoltées

BOUTEILLE N° 14459

ANNÉE 1993

LES ASSOCIÉS-GÉRANTS

*Hugue-Frédéric Pichet*  
A. d. Vosne

Bouteille au domaine

Mise en bouteille au domaine

SOCIÉTÉ CIVILE DU DOMAINE DE LA ROMANÉE-CONTI  
PROPRIÉTAIRE A VOSNE-ROMANÉE (COTE-D'OR) FRANCE

# RICHEBOURG

APPELLATION RICHEBOURG CONTRÔLÉE

*11.107 Bouteilles Récoltées*

BOUTEILLE N° 08950

ANNÉE 1993

LES ASSOCIÉS-GÉRANTS

*Henri-Frédéric Roch*  
*A. de Villain*

*Mise en bouteille au domaine*

# DOMAINE DE LA ROMANÉE-CONTI

The owner of the most famous Grands Crus on the Côte, a maker of richly complex, long-lasting wines, one of the first and most consistent advocates of estate-bottling- for many people the Domaine de la Romanée-Conti is the domaine in Burgundy, In addition to its two famous monopoles Romanée Conti and La Tâche, the DRC owns nearly half of Richebourg, over half of Romanée Saint Vivant and over a third of Grands Echézeaux. With the Richebourg and Grands Echézeaux appellations, DRC has for decades set the standard by which all others are measured.

Since the early 1990's the estate has been taking advice from Claude Bourguignon on the health of its soils. It has stopped using fertilisers, and now makes its own fermented compost which is spread on the land, according to need, to revitalize the soils microbiological activity and improve its texture. Magnesium is provided to help absorb old excess potassium dressings. Although the domaine does not use the word biological, those are its methods. The average age of the vines is most impressive.

The estate was, I believe the first to install a conveyor belt table for hand sorting unripe or rotten grapes in the vat-house, after grape-picking. Fermentation takes place in nine traditional, open-topped round or oval wooden vats, in respect of the four top wines. The Grands Echézeaux and Echézeaux have since 1989 fermented in eight rectangular, open topped, stainless steel box-vats equipped with automatic punching down.

Since 1991 there have been different cellars for each vintage maturing in barrel, the second one being that under the old Marey-Monge buildings, at the foot of Romanée Saint Vivant by the church, where the natural temperate and humidity are excellent.

In common with several other of Vosne's best estates (Henri Jaye, Méo Camuzet, Leroy) the DRC buys its barrels from Saint Romain cooper Francois Frères. However it invests in staves for three years natural drying and leaching in the rain, sun and open air, to ensure that its barrel wood is appropriately matured. The whole harvest has been put into new wood for the last fifteen to twenty years. This policy can result in markedly oaky wines in light vintages, if they are tasted when young, however the flavours of long aged oak staves of the best possible origins subsequently seem to marry exceptionally beautifully with the vinosity of the individual wines.

At different stages since the war the two families (de Villaine and Leroy) who own this domaine must have considered employing a full-time oenologist as wine-maker, yet set their faces against the idea. No doubt they have access to Burgundy's finest in the same way that they can call on the services of Claude Bourguignon or Raymond Bernard whenever they need them.

Overall responsibility at the domaine was for many years shared, as is well known, by Mme Bize-Leroy and Aubert de Villaine, and their joint actions often produced wonderful results. In 1991 Mme Bize-Leroy was ousted by the shareholders from her position as co-director, after disagreements over how the DRC wines were then being distributed.

On the retirement of Andrew Noblet in 1984 responsibility for the vineyards fell to Gerard Marlot, splitting the DRC's vinicultural and wine-making activities into two, Noblet's son Bernard in due course becoming manager of vat-houses and cellars. But the overall wine-making responsibility lies, I believe with Aubert. Given the low yields that the domaine is now achieving given the involvement with its great sites and the given the experience of thirty years of DRC vintages under his belt, we can surely look forward to many spectacular and wonderful bottles from the coming years.

**Anthony Hanson, M.W.**  
Senior Consultant  
Burgundy 2004

1998

2000

PRODUIT DE FRANCE

*Montrachet*  
GRAND CRU  
APPELLATION MONTRACHET GRAND CRU CONTRÔLÉE

Mis en bouteille à la propriété  
Domaine Marc COLIN  
Viticulteurs à SAINT-AUBIN - Côte-d'Or - France

GRANDS VINS DE BOURGOGNE

PRODUIT DE FRANCE

*Montrachet*  
GRAND CRU  
APPELLATION MONTRACHET GRAND CRU CONTRÔLÉE

Alc. 13,5% vol. NET VOLUME 750 ml  
Mis en bouteille à la propriété par  
Domaine Marc COLIN et Fils  
Viticulteurs à SAINT-AUBIN - Côte-d'Or - France

## Marc Colin

The Domaine is now run by Marc Colin's sons Damien and Joseph whilst the third son now produces his own wine under his own name- Pierre-Yves Colin. Marc has built up an enviable reputation in St-Aubin and its surrounds for exquisitely crafted Chardonnay. The Domaine has 20 hectares over 30 appellations, the vast majority are white. Eight premier cru St Aubin sit in their portfolio alongside Puligny-Montrachet La Garenne, Chassagne-Montrachet 1er cru such as En Cailleret and Les Champs Gains and a small plot of Le Montrachet. The sons have built on their father's legacy of sustainable viticulture, low yields and they now avoid batonnage in favour of natural yeasts and newer oak.

	<b>Marc Colin, Montrachet 1995</b> <i>Grand Cru, Côte de Beaune</i>			<b>Marc Colin, Montrachet 2002</b> <i>Grand Cru, Côte de Beaune</i>	
93	2 bottles	<i>per lot</i> £500-600 €560-670	+99	2 bottles	<i>per lot</i> £500-600 €560-670
	<b>Marc Colin, Montrachet 1998</b> <i>Grand Cru, Côte de Beaune</i>			<b>Marc Colin, Montrachet 2003</b> <i>Grand Cru, Côte de Beaune</i> <i>In original carton</i>	
+94	2 magnums	<i>per lot</i> £1,000-1,200 €1,200-1,300	+100	12 bottles	<i>per lot</i> £2,500-3,000 €2,800-3,400
	<b>Marc Colin, Montrachet 1998</b> <i>Grand Cru, Côte de Beaune</i> <i>Not in original carton</i>			<b>Marc Colin, Montrachet 2004</b> <i>Grand Cru, Côte de Beaune</i>	
+95	11 bottles	<i>per lot</i> £2,800-3,500 €3,200-3,900	+101	1 magnum	<i>per lot</i> £500-600 €560-670
	<b>Marc Colin, Montrachet 1999</b> <i>Grand Cru, Côte de Beaune</i>			<b>Marc Colin, Montrachet 2006</b> <i>Grand Cru, Côte de Beaune</i> <i>In original carton</i>	
+96	1 magnum	<i>per lot</i> £500-600 €560-670	+102	11 bottles	<i>per lot</i> £2,800-3,500 €3,200-3,900
	<b>Marc Colin, Montrachet 2000</b> <i>Grand Cru, Côte de Beaune</i>			<b>Marc Colin, Montrachet 2007</b> <i>Grand Cru, Côte de Beaune</i> <i>In original wooden case</i>	
+97	2 magnums	<i>per lot</i> £1,000-1,200 €1,200-1,300	+103	6 bottles	<i>per lot</i> £1,500-1,800 €1,700-2,000
	<b>Marc Colin, Montrachet 2001</b> <i>Grand Cru, Côte de Beaune</i>			<b>Joseph Drouhin, Marquis de Laguiche, Montrachet 1998</b> <i>Grand Cru, Côte de Beaune</i>	
+98	7 bottles	<i>per lot</i> £1,400-1,800 €1,600-2,000	+104	3 magnums	<i>per lot</i> £2,100-2,700 €2,400-3,000

MONTRACHET



## Domaine Leflaive

### History

The earliest family history goes back to 1717 when Claude Leflaive settled in Puligny-Montrachet. The Domaine of today more directly goes back to Joseph Leflaive (1870–1953), who was a native of Puligny-Montrachet. In 1905, when Burgundy had not yet recovered from the effect of the phylloxera epidemic and therefore vineyards were for sale at a very low price, Leflaive was able to buy 25 hectares. In 1990 Anne-Claude Leflaive and her cousin Vincent Leflaive took over the management of the domain. Anne-Claude Leflaive ran the domaine until her untimely death in 2015.

### Vineyards

The Domaine owns almost 25 hectares of vineyards mainly located in and around Puligny-Montrachet. Their holdings include 0.08 hectares of Le Montrachet, 2 hectares of Chevalier-Montrachet, 1.91 hectares of Bâtard-Montrachet, 1.6 hectares of Bienvenues-Bâtard-Montrachet and Puligny-Montrachet Premier Crus; Le Clavoillon, Les Combettes, Les Folatières and Les Pucelles. Domaine Leflaive has been totally biodynamic since 1997 and Pierre Morey was estate manager since 1989 until Eric Remy took over in 2008.

### Vinification

The wines are fermented at between 18 to 24° C, given 10-40% light toast new oak (there is one 500-litre cask for the Montrachet) and, after 12 months, racked into stainless steel where they wait another 6 months before bottling.

### Wines

This is the very summit of white Burgundy. Outstanding wines that have the capacity to be very long-lived and develop richness, depth and complexity with bottle-age. These are some of the most highly sought-after white wines in the world.



Lot 108

Lot 109

**Domaine Leflaive, Montrachet 2000***Grand Cru, Côte de Beaune*

*105	4 bottles	<i>per lot</i>	£12,000-16,000
			€14,000-18,000

**Domaine Leflaive, Montrachet 2007***Grand Cru, Côte de Beaune*

*110	3 bottles	<i>per lot</i>	£9,000-12,000
			€11,000-13,000

**Domaine Leflaive, Montrachet 2003***Grand Cru, Côte de Beaune**In original wooden case*

*106	2 bottles	<i>per lot</i>	£4,000-5,000
			€4,500-5,600

**Domaine Leflaive, Montrachet 2008***Grand Cru, Côte de Beaune*

*111	3 bottles	<i>per lot</i>	£7,500-9,000
			€8,400-10,000

**Domaine Leflaive, Montrachet 2004***Grand Cru, Côte de Beaune**In original wooden case*

*107	4 bottles	<i>per lot</i>	£10,000-12,000
			€12,000-13,000

**Domaine Leflaive, Montrachet 2009***Grand Cru, Côte de Beaune**In original wooden case, damaged lid*

*112	3 bottles	<i>per lot</i>	£9,000-12,000
			€11,000-13,000

**Domaine Leflaive, Montrachet 2005***Grand Cru, Côte de Beaune**One badly stained label*

108	3 bottles	<i>per lot</i>	£7,500-9,000
			€8,400-10,000

**Domaine Leflaive, Montrachet 2010***Grand Cru, Côte de Beaune**In original wooden case*

*113	3 bottles	<i>per lot</i>	£12,000-15,000
			€14,000-17,000

**Domaine Leflaive, Montrachet 2006***Grand Cru, Côte de Beaune*

109	3 bottles	<i>per lot</i>	£7,500-9,000
			€8,400-10,000

**Domaine Leflaive, Montrachet 2011***Grand Cru, Côte de Beaune**In original wooden case*

*114	3 bottles	<i>per lot</i>	£7,500-9,000
			€8,400-10,000

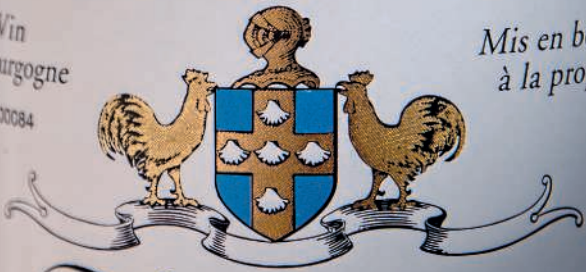




2010

Vin  
de Bourgogne  
N° 00084

Mis en bouteilles  
à la propriété



*Montrachet*

GRAND CRU

APPELLATION MONTRACHET CONTRÔLÉE

13% vol

DOMAINE LEFLAIVE  
PROPRIÉTAIRE A PULIGNY-MONTRACHET (CÔTE-D'OR)

### Burgundy loses Anne-Claude

This is the sort of article I hate writing. It seems quite wrong to me that a woman as strong and influential as Anne-Claude Leflaive should be felled in her fifties. But yesterday morning her family, including her husband Christian and her daughters Marine, Charlotte, and Claire bid her farewell round her hospital bed.

Anne-Claude ran the world-famous Domaine Leflaive, Puligny-Montrachet's landmark wine producer, since 1990, for the first few years in tandem with her cousin Olivier Leflaive and as sole manager after the death of her father Vincent in 1993.

She needed not just wine-production skills but human skills, too, since so many family members have a stake in the domaine. The list of those on the management board alone, cited on the domaine's website, gives some flavour of this: 'Maria Cruz de Suremain (niece of Anne Leflaive), Marilys de La Morandière (daughter of Jo Leflaive), and Bernard de Noüe (son of Jeanne de Noüe, sister of Joseph Régis Leflaive and Vincent Leflaive)'. I would often see her in Puligny in the company of various family members, none of whom looked as though they got their hands dirty as often as Anne-Claude, who was a great and practical innovator.

Along with Burgundy's other strong woman, Lalou Bize-Leroy (who is celebrating her sixtieth vintage this weekend), Anne-Claude Leflaive led the way to the now-widespread adoption of biodynamic viticulture in Burgundy. But unlike Lalou, she always believed in co-operation and enthusiastic communication with others. Bit by bit she converted Domaine Leflaive and, most conspicuously, introduced horses to her well-tended vineyards above the village.

A fervent believer in ecology and sustainability, she lived in a specially designed low-input house designed by her architect daughter. She also set up a wine school in the village to educate others about what she believed in. It has, incidentally, taken me hours to write this because I am resisting its message.

I have known her as a brave, bold, free spirit for decades, from even before her visit to Gleneagles for one of the wine weekends I hosted there in the 1980s when other visitors included Jean-Michel Cazes, Robert Drouhin, Angelo Gaja, Gérard Jaboulet, Henri Krug, Dominique Lafon. Alexandre de Lur-Saluces, Bruno Prats, a young Paul Pontallier and a mature Amyas Symington.

Anne-Claude had been unwell for some time and I'm sure that the domaine is in excellent hands, not least in those of maître-de-chai Éric Remy, who took over from Pierre Morey in 2008. But Domaine Leflaive, and the whole of Burgundy, will not be the same without her.

Jancis Robinson MW, [www.jancisrobinson.com](http://www.jancisrobinson.com),  
7th April 2015

### Domaine Leflaive, Montrachet 2012

Grand Cru, Côte de Beaune

\*115 1 bottle per lot £4,000-5,000  
€4,500-5,600

### Michel Colin-Déléger, Montrachet 2001

Grand Cru, Côte de Beaune

\*116 1 bottle per lot £200-250  
€230-280

### Hermitage La Chapelle 1937

Rhône, Paul Jaboulet Aîné

In domaine wooden case. Re-conditioned at the domaine. Bin-soiled labels, slightly damaged. One with U.S.A. import slip-label

\*117 2 bottles per lot £6,000-10,000  
€6,800-11,000

118 No Lot

### Hermitage La Chapelle 1961

Rhône, Paul Jaboulet Aîné

In domaine wooden case. Re-conditioned at the domaine. Excellent appearance

\*119 1 half bottle per lot £4,000-5,000  
€4,500-5,600



Lot 117



**Hermitage La Chapelle 1961**

*Rhône, Paul Jaboulet Aîné  
In domaine wooden case. Re-conditioned at the  
domaine April 2012. Excellent appearance. Level:  
2.5cms below base of cork*

\*120 1 bottle per lot £12,500-15,000  
€14,500-17,000

**Hermitage La Chapelle 1961**

*Rhône, Paul Jaboulet Aîné  
In domaine wooden case. Re-conditioned at the  
domaine, April 2012. Excellent appearance*

\*121 6 bottles per lot £75,000-90,000  
€84,000-100,000

**Hermitage La Chapelle 1978**

*Rhône, Paul Jaboulet Aîné  
Six in original wooden case, good appearance. One in  
individual, wooden case, re-conditioned at the domaine  
27th February 2013, excellent appearance*

\*122 7 bottles per lot £4,500-5,500  
€5,100-6,200

**J. L. Chave, Hermitage 1990**

*Rhône  
In original carton*

\*123 12 bottles per lot £4,000-5,000  
€4,500-5,600



**Tenuta dell'Ornellaia, Ornellaia 1990***Tuscany**Not in original wooden case. Wax capsule. Tissue-stained label. Level into neck*

*124	1 imperial	per lot	£1,500-2,000
			€1,700-2,200

**Tenuta dell'Ornellaia, Ornellaia 1990***Tuscany**Not in original wooden case. Wax capsule, repaired, with signs of seepage. Tissue-stained label. Level into neck*

*125	1 imperial	per lot	£1,500-2,000
			€1,700-2,200

**Castello di Ama, Chianti Classico Vigneto la Casuccia 1995***Tuscany**In original six-bottle cartons*

*126	12 bottles	per lot	£800-1,000
			€900-1,100

**Castello di Ama, L'Apparita 1995***Tuscany**In original wooden six-bottle cases*

*127	12 bottles	per lot	£600-800
			€680-900

**Bruno Giacosa, Barolo Le Rocche del Falletto 1997***Piedmont**In original wooden six-bottle, banded cases*

*128	12 bottles	per lot	£1,200-1,500
			€1,400-1,700

**Bruno Giacosa, Barbaresco Asili 1997***Piedmont**In original wooden six-bottle, banded cases*

*129	12 bottles	per lot	£1,000-1,400
			€1,200-1,600

**Bruno Giacosa, Barolo Le Rocche del Falletto 1998***Piedmont**In original wooden six-bottle, banded cases*

*130	12 bottles	per lot	£1,200-1,500
			€1,400-1,700

**Bruno Giacosa, Barbaresco Asili 1998***Piedmont**In original wooden six-bottle, banded cases*

*131	12 bottles	per lot	£900-1,200
			€1,100-1,300

**Bruno Giacosa**

Bruno Giacosa has built up an enviable reputation for his Barolo and Barbaresco wines from the Piedmont region of North West Italy. Especially highly regarded are the Barolo Falletto di Serralunga, Barbaresco Asili, Barbaresco Santo Stefano di Nieve, Barbaresco Gallina di Nieve, Barbaresco Rabaja and Nebbiolo d'Alba.

Bruno Giacosa, as referenced by Robert M. Parker, Jr., "... is a quiet and dignified winemaking genius in Neive ... the least promotion-conscious winemaker in Italy who prefers to let his wines do the talking for him."

Bruno Giacosa is a firm believer in single vineyard bottlings and his policy of only releasing his top wines in vintages which are of the highest quality has propelled his wines to cult status and increased the desirability and collect ability of his wines.

Other wines produced include Barbera d'Alba, Dolcetto d'Alba, and white wines, Roero Arneis and Spumante Giacosa.

**Bruno Giacosa, Barolo Le Rocche del Falletto 1999***Piedmont**In original wooden six-bottle, banded cases*

*132	12 bottles	per lot	£1,500-2,000
			€1,700-2,200

**Bruno Giacosa, Barolo Le Rocche del Falletto Riserva 2000***Piedmont**In original wooden six-bottle, banded cases*

*133	12 bottles	per lot	£1,800-2,500
			€2,100-2,800

**Bruno Giacosa, Barolo Le Rocche del Falletto Riserva 2001***Piedmont**In original wooden six-bottle, banded cases*

*134	12 bottles	per lot	£2,500-3,000
			€2,800-3,400

**Abadia Retuerta, Cuvée Campanario 1996***Castilla y Leon**In original six-bottle cartons. U.S. import slip-labels*

*135	42 bottles	per lot	£650-850
			€730-950

*136	42	„	
------	----	---	--

**Abadia Retuerta, Cuvée El Palomar 1996***Castilla y Leon**In original six-bottle cartons. U.S. import slip-labels*

*137	48 bottles	per lot	£750-950
			€840-1,100



FALLETTO

09012438  
BAROLO  
DENOMINAZIONE DI ORIGINE LITRI  
CONTROLLATA E GARANTITA

AAJ 00297161  
BAROLO  
DENOMINAZIONE DI ORIGINE LITRI  
CONTROLLATA E GARANTITA 0,750

**BAROLO**  
DENOMINAZIONE DI ORIGINE CONTROLLATA E GARANTITA  
LE ROCHE DEL FALLETTO DI SERRALUNGA D'ALBA

**2001**

*Di questa annata sono state prodotte N° 10600 bottiglie da litri 0,750 N° 1500 magnum da litri 1,5 e N° 200 magnum da litri 3*

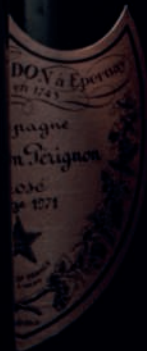
*La presente bottiglia porta il*

**N° 4020 \***

*Si consiglia di servirlo a temperatura ambiente*

Azienda Agricola  
**FALLETTO**  
di Bruno Giacosa

	<b>Penfolds Grange Bin 95</b> <b>1979</b> <i>Excellent appearance. Level base of neck</i>	(1)	145	1 bottle	<i>per lot</i> £500-700 €560-780
	<b>1996</b> <i>Excellent appearance. Level into neck</i>	magnum (1)			
*138	1 magnum and 1 bottle	<i>per lot</i> £600-750 €680-840			
	<b>Diamond Creek, Lake Cabernet Sauvignon 1990</b> <i>Napa Valley.</i> <i>Wax capsule. Level into neck</i>				
*139	1 double magnum	<i>per lot</i> £800-1,000 €900-1,100			
	<b>Salon Le Mesnil Blanc de Blancs 1982</b> <i>Slightly corroded capsule. damaged label</i>				
	<b>1983</b> <i>Good appearance</i>	(1)			
	<b>1988</b> <i>Slightly damaged label</i>	(1)			
*146	3 bottles	<i>per lot</i> £1,300-2,000 €1,500-2,200			
	<b>Araujo Estate, Eisele Vineyard Cabernet Sauvignon 1992</b> <i>Napa Valley</i> <i>Excellent appearance</i>				
*140	2 magnums	<i>per lot</i> £700-800 €790-900			
	<b>Dom Pérignon Rosé 1990</b> <i>In original cartons</i>				
*147	9 magnums	<i>per lot</i> £6,500-8,500 €7,500-9,500			
	<b>Far Niente Merlot 1994</b> <i>Napa Valley</i> <i>Not in original carton</i>				
*141	12 bottles	<i>per lot</i> £600-800 €680-900			
	<b>Dom Pérignon Rosé 1996</b> <i>In original cartons</i>				
*148	9 magnums	<i>per lot</i> £3,600-4,500 €4,100-5,000			
	<b>Bollinger 'Extra Quality' 1952</b> <i>Corroded, damaged foil. Bin-soiled, damaged label.</i> <i>Level into foil. Good colour</i>				
*142	1 bottle	<i>per lot</i> £400-500 €450-560			
	<b>Dom Pérignon Rosé 1996</b> <i>In original carton</i>				
*149	3 bottles	<i>per lot</i> £600-750 €680-840			
	<b>Louis Roederer Cristal 1969</b> <i>Corroded, slightly damaged foil. Bin-soiled, damaged label. Level: 0.5cms below foil. Good colour</i>	(1)			
	<b>1989</b> <i>Good appearance</i>	(1)			
*143	2 bottles	<i>per lot</i> £600-750 €680-840			
	<b>Dom Pérignon Rosé 1996</b> <i>In original carton</i>				
*150	6 bottles	<i>per lot</i> £1,200-1,500 €1,400-1,700			
	<b>Dom Pérignon Rosé 1971</b> <i>Original tissues. Good appearance, slightly nicked labels. U.S. import slip-labels. Levels into foils</i>				
144	4 magnums	<i>per lot</i> £3,200-4,000 €3,600-4,500			
	<b>Dom Pérignon 2000</b> <i>In original carton</i>				
*151	6 bottles	<i>per lot</i> £550-650 €620-730			



**FINE VINTAGE PORT**

Lying in Corsham, Wiltshire (Octavian)

*Offered in bond, available duty-paid***Warre 1960***Some damaged capsules, with signs of seepage. Badly bin-soiled, stained labels, some creased and damaged. Levels: top-shoulder or better, two upper, two mid, one below low-shoulder*\*152 17 bottles per lot *per lot* £850-1,200  
€960-1,300**Dow 1983***Not in original wooden cases. Corroded capsules. Badly damaged and bin-soiled labels.*\*153 24 bottles *per lot* £700-900  
€790-1,000**Dow 1994***In original wooden cases*\*154 24 bottles *per lot* £650-800  
€730-900

Lying in Corsham, Wiltshire (Octavian)

**Warre 1963***In original wooden case. Damaged capsules, some with signs of seepage. Bin-soiled, stained and damaged labels. Levels: top-shoulder or better, one upper, one low-shoulder*155 10 bottles *per lot* £1,000-1,200  
€1,200-1,300**Warre 1970***Not in original wooden case*156 12 bottles *per lot* £550-750  
€620-840**Taylor 1994***In original wooden case, damaged lid*157 6 bottles *per lot* £450-550  
€510-620

Lying in Corsham, Wiltshire (Octavian)

**Fonseca 1977***Not in original wooden case*158 12 bottles *per lot* £800-1,000  
€900-1,100

Lying in Corsham, Wiltshire (Octavian)

**Fonseca Guimaraens 1995***In original wooden cases*\*159 36 bottles *per lot* £550-750  
€620-840

Lying in Corsham, Wiltshire (Octavian)

**Graham 1997**

(12)

**Dow 2000**

(12)

*In original wooden cases*160 24 bottles *per lot* £600-800  
€680-900**Fonseca 2000**

(6)

**Graham 2000**

(6)

**Taylor 2000**

(6)

*In original wooden cases*161 18 bottles *per lot* £480-650  
€540-730



	Lying in Corsham, Wiltshire (Octavian)				
	<b>Graham 1997</b>	(12)			
	<b>Cockburn 2000</b>	(12)			
	<i>In original wooden cases</i>				
162	24 bottles		per lot	£500-650	
				€560-730	
	<b>Fonseca 2000</b>				
	<i>In original wooden case</i>	(6)			
	<b>Graham 2000</b>				
	<i>In original wooden case</i>	(6)			
	<b>Taylor 2000</b>				
	<i>In original wooden case</i>	(6)			
163	18 bottles		per lot	£480-620	
				€540-690	

**FINE AND MATURE BORDEAUX FROM  
A PRIVATE COLLECTOR**

Lying in Corsham, Wiltshire (Octavian)

**Château Mouton-Rothschild  
1950**

*Corroded, damaged capsule. Badly bin-soiled, damaged label. Level low-shoulder*

(1)

**1966**

*Corroded, damaged capsule. Badly bin-soiled, damaged label. Level mid-shoulder*

(1)

**1969**

*Corroded, damaged capsule. Bin-soiled label. Level upper-shoulder*

(1)

**1975**

*Corroded, damaged capsules. Badly bin-soiled labels. U.S. import slip labels. Levels: one mid, one mid/upper shoulder*

(2)

**1976**

*Corroded capsule. Badly bin-soiled label. Level top-shoulder*

(1)

**1980**

*Corroded, damaged capsule. Badly bin-soiled, damaged labels. Level into neck*

(1)

164	7 bottles		per lot	£1,100-1,400	
				€1,300-1,600	

**Clos Fourtet 1955**

*Corroded capsule. Bin-soiled, damaged label. Level mid-shoulder*

(1)

**Château Cos D'Estournel 1966**

*Berry Bros & Rudd bottled. Corroded capsules, one badly damaged. Bin-soiled labels. Levels: one top, one upper-shoulder*

(2)

**Château Léoville-Las-Cases 1966**

*Berry Bros & Rudd bottled. Corroded capsules. Bin-soiled, damaged labels. Levels top-shoulder*

(2)

**Château Gruaud-Larose 1967**

*Corroded, badly damaged capsules. Bin-soiled labels, one damaged. Levels: 6cms below base of corks*

(3)

**Vieux-Château-Certain 1978**

*Corroded, damaged capsules. Bin-soiled, badly damaged labels. Levels: one upper, one mid-shoulder*

(2)

165	10 bottles		per lot	£500-700	
				€560-780	

**Château Latour 1957**

*Corroded, damaged capsule. Very badly bin-soiled, damaged label. Level mid-shoulder*

(1)

**Château Lafite-Rothschild 1960**

*Corroded capsule. Badly bin-soiled, damaged label, partly re-attached. Level upper-shoulder*

(1)

**Château Latour 1962**

*Slightly corroded capsules, one damaged. Slightly bin-soiled labels. Levels base of neck*

(2)

**Château Haut-Brion 1962**

*Corroded, damaged capsule. Very badly bin-soiled, damaged label. Level: 5cms below base of cork*

(1)

**Château Lafite-Rothschild Believed 1963**

*Corroded, damaged capsule. Remains of label only, vintage illegible. Level top-shoulder*

(1)

**Château Latour 1964**

*Corroded, damaged capsule. Damaged label. Level mid-shoulder*

(1)

**Château Haut-Brion 1970**

*Corroded, damaged capsules. Bin-soiled, slightly damaged labels. Levels: 5cms below base of corks*

(2)

**Château Margaux 1987**

*Corroded capsule. Very badly bin-soiled, damaged, faded label. Level base of neck*

(1)

166	10 bottles		per lot	£1,100-1,400	
				€1,300-1,600	

	<b>Château Cos d'Estournel 1971</b>			
	<i>Bin-soiled, damaged label. Level base of neck</i>	(1)		
	<b>Château Léoville-Las-Cases 1975</b>			
	<i>Corroded, damaged capsule. Bin-soiled, damaged label.</i>		170	
	<i>Berry Bros. &amp; Rudd slip label. Level upper-shoulder</i>	(1)		
	<b>Château Lagrange (St Julien) 1978</b>			
	<i>Corroded capsules. Bin-soiled labels, one damaged.</i>			
	<i>One Argentinian import slip label. Levels: top-shoulder</i>	(3)		
	<b>Château Pontet-Canet 1978</b>			
	<i>Corroded capsules. Bin-soiled labels, three damaged.</i>			
	<i>Levels top-shoulder or better</i>	(4)		
	<b>Château Léoville-Barton 1979</b>			
	<i>Corroded, damaged capsule. Bin-soiled label. Level base of neck</i>	(1)	171	
	<b>Château Lascombes 1982</b>			
	<i>Corroded, damaged capsule. Badly bin-soiled, badly damaged label. Level base of neck</i>	(1)		
	<b>Château Pichon-Longueville, Lalande 1985</b>			
	<i>Corroded capsule. Bin-soiled, badly damaged label. Level base of neck</i>	(1)		
	<b>Château Lascombes 1985</b>			
	<i>Corroded, damaged capsule. Badly bin-soiled, badly damaged label. Level into neck</i>	(1)		
	<b>Château Giscours 1986</b>			
	<i>Corroded capsules. Badly bin-soiled, damaged labels. Levels into neck</i>	(2)		
	<b>Château Léoville-Barton 1987</b>			
	<i>One damaged capsule. Two bin-soiled labels. Levels into neck</i>	(3)		
	<b>Château Ducru-Beaucaillou 1988</b>			
	<i>Corroded capsule. Badly bin-soiled, damaged label. Level into neck</i>	impériale (1)		
	<b>Château Ducru-Beaucaillou 1988</b>			
	<i>Bin-soiled label. Level into neck</i>	(1)	172	
	<b>Château Léoville-Barton 1994</b>			
	<i>Corroded capsules. Bin-soiled labels. Levels into neck</i>	(3)		
	<b>Château Pichon-Longueville, Baron 1997</b>			
	<i>Slightly bin-soiled label. Level into neck</i>	(1)		
167	1 impériale and 23 bottles			<i>per lot</i> £750-1,000 €840-1,100
	<b>Petrus 1979</b>			
	<i>Pomerol, cru exceptionnel</i>			
	<i>Corroded capsules. Badly bin-soiled, damaged labels, one detached/re-attached with tape. Levels into neck</i>			
168	4 bottles			<i>per lot</i> £1,100-1,400 €1,300-1,600
	<b>Château Mouton-Rothschild 1993</b>			
	<i>Good appearance. Level into neck</i>	magnum (1)		
	<b>1994</b>			
	<i>Bin-soiled label, badly damaged. Level into neck</i>	magnum (1)		
169	2 magnums			<i>per lot</i> £1,100-1,400 €1,300-1,600
	<b>Les Forts de Latour 1994</b>			
	<i>Pauillac</i>			
	<i>Bin-soiled labels. Levels into neck</i>			
	10 bottles			<i>per lot</i> £1,100-1,400 €1,300-1,600
	<b>A CASE OF CHATEAU LAFITE 1970</b>			
	<i>Lying in Corsham, Wiltshire (Octavian)</i>			
	<b>Château Lafite-Rothschild 1970</b>			
	<i>Pauillac, 1er cru classé</i>			
	<i>In original wooden case, banded and wine-stained.</i>			
	12 bottles			<i>per lot</i> £3,500-4,500 €4,000-5,000
	<b>FINE AND MATURE BORDEAUX</b>			
	<i>Lying in Corsham, Wiltshire (Octavian)</i>			
	<b>Château Haut-Brion 1970</b>			
	<i>Corroded capsule. Bin-soiled, damaged label.</i>			
	<i>Level 3cms below base of cork</i>	magnum (1)		
	<b>Château Latour 1975</b>			
	<i>Corroded capsule, damaged. Bin-soiled label.</i>			
	<i>Level mid/upper-shoulder</i>	magnum (1)		
	<b>Château Lafite 1988</b>			
	<i>Slightly bin-soiled label. Level into neck</i>	magnum (1)		
	<b>Carruaudes de Lafite 1994</b>			
	<i>Slightly corroded capsule. Bin-soiled label. Level into neck</i>	magnum (1)		
	4 magnums			<i>per lot</i> £1,500-1,700 €1,700-1,900
	<b>Château Phelan-Ségur 1982</b>			
	<i>Corroded capsule. Bin-soiled label.</i>			
	<i>Level into neck</i>	double magnum (1)		
	<b>Château Gruaud-Larose 2005</b>			
	<i>impériale (1)</i>			
173	1 impériale and 1 double magnum			<i>per lot</i> £480-550 €540-620
	<b>Château Gruaud-Larose 1989</b>			
	<i>Saint-Julien, 2ème cru classé</i>			
	<i>Not in original wooden case. Slightly bin-soiled labels.</i>			
174	11 bottles			<i>per lot</i> £650-750 €730-840
	<b>Château Cos d'Estournel 1996</b>			
				half (11)
	<b>Château Pichon-Longueville, Lalande 2001</b>			half (8)
	<b>Château Montrose 2008</b>			half (4)
175	23 half bottles			<i>per lot</i> £850-1,000 €960-1,100



Lying in Corsham, Wiltshire (Octavian)

**Château Margaux 1972**

*Margaux, 1er cru classé*

*Not in original wooden cases. Corroded capsules, some damaged. Bin-soiled, damp-affected labels. Levels top-shoulder*

176 24 bottles *per lot* £1,200-1,600  
€1,400-1,800

**Château Margaux 1972**

*Margaux, 1er cru classé*

*Not in original wooden cases. Corroded capsules, some damaged. Bin-soiled, damp-affected labels. Levels upper-shoulder*

177 24 bottles *per lot* £1,000-1,400  
€1,200-1,600

Lying in Corsham, Wiltshire (Octavian)

**Château Lynch-Bages 1983**

*Pauillac, 5ème cru classé*

*In original wooden case. Good appearance. Levels: six base of neck, four top, two upper-shoulder*

178 12 bottles *per lot* £600-800  
€680-900

**Château Lynch-Bages 1983**

*Pauillac, 5ème cru classé.*

*In original wooden cases. Signs of seepage. Sixteen good appearance, six bin-soiled labels. Levels: one base of neck, nine top, four upper, one mid/upper, one mid, three mid/low, three low-shoulder*

·179 22 bottles *per lot* £600-800  
€680-900

**Château Nenin 1983**

*Pomerol*

*In original wooden cases, two missing lids. One corroded capsule, one damaged. Eleven bin-soiled labels, the rest good appearance. Levels: seven base of neck, twenty-three top, two upper, three mid/upper-shoulder*

180 35 bottles *per lot* £800-900  
€900-1,000

**A RANGE OF EXCELLENT BORDEAUX INCLUDING CASES OF FIRST GROWTHS**

Lying in Corsham, Wiltshire (Octavian)

**Château Lafite-Rothschild 1983**

*Pauillac, 1er cru classé*

*In original wooden case. Original tissues.*

*Two damaged capsules. Good appearance.*

*Levels base of neck or better*

181 12 bottles *per lot* £3,500-4,500  
€4,000-5,000

**Château Margaux 1983**

*Margaux, 1er cru classé*

*In original wooden case. Good appearance. Levels: ten base of neck or better and two top-shoulder*

182 12 bottles *per lot* £3,000-4,000  
€3,400-4,500

**Château Mouton-Rothschild 1983**

*Pauillac, 1er cru classé*

*In original wooden case. Slightly bin-soiled labels.*

*Levels: eight base of neck and four top-shoulder*

183 12 bottles *per lot* £2,400-3,000  
€2,700-3,400

**Château Margaux 1988**

*Margaux, 1er cru classé*

*In original wooden case. Good appearance. Levels base of neck or better*

184 12 bottles *per lot* £2,400-3,000  
€2,700-3,400

**Château Haut-Brion 1988**

*Pessac (Graves), 1er cru classé*

*In original wooden case. Good appearance*

185 12 bottles *per lot* £2,600-3,200  
€3,000-3,600

**Château Léoville-Barton 1988**

*Saint-Julien, 2ème cru classé*

*In original wooden case*

186 12 bottles *per lot* £550-650  
€620-730

**Château Canon 1988**

*In original wooden case*

(12)

**Château Magdelaine 1990**

*In original wooden case*

(12)

187 24 bottles *per lot* £1,000-1,300  
€1,200-1,500

**Château Lafite-Rothschild 1989**

*Pauillac, 1er cru classé*

*In original wooden case. Original tissues. Good appearance. Levels into neck*

188 12 bottles *per lot* £4,200-5,000  
€4,700-5,600

**Château Margaux 1989**

*Margaux, 1er cru classé*

*In original wooden case*

189 12 bottles *per lot* £2,600-3,000  
€3,000-3,400



**Le Bahans du Haut-Brion 1989**

Pessac-Léognan  
In original wooden case

190 12 bottles per lot £1,300-1,600  
€1,500-1,800

**Vieux-Château-Certan 1989**

Pomerol  
In original wooden case

191 12 bottles per lot £1,100-1,400  
€1,300-1,600

**Château Batailley 1989**

In original wooden case (12)

**Château Haut-Bailly 1995**

In original wooden case (12)

192 24 bottles per lot £750-950  
€840-1,100

**Château Latour 1990**

Pauillac, 1er cru classé  
In original wooden case. Original tissues. Good  
appearance. Levels base of neck.

193 12 bottles per lot £3,800-4,400  
€4,300-4,900

**Château d'Angludet 1990**

In original wooden case (12)

**Château Haut-Batailley 1995**

(4)

**Château de Pez 1995**

(4)

**Château Dutruch-Grand-Poujeaux 1995**

(4)

**Château d'Angludet 1998**

In original wooden case (12)

**Château Chasse-Spleen 1998**

In original wooden case (12)

194 48 bottles per lot £700-900  
€790-1,000

**Château Latour 1995**

Pauillac, 1er cru classé  
In original wooden case

195 12 bottles per lot £3,800-4,400  
€4,300-4,900

**Château Ducru-Beaucaillou 1995**

Saint-Julien, 2ème cru classé  
In original wooden case

196 12 bottles per lot £1,000-1,400  
€1,200-1,600

**Pavillon Rouge du Château Margaux 1995**

Margaux  
In original wooden case

197 12 bottles per lot £700-900  
€790-1,000

**Château Latour**

Château Latour manages to achieve a rare stylistic balance, in that its wines are internationally known for both their elegance and purity of linear fruit flavour, and for their power, muscularity and heroic longevity. Few wines age with such consummate grace as those of Château Latour. These wines are highly tannic in youth, and are famously distinctive in the way they mature slowly, and on their own terms; stubbornly refusing to succumb to the effects of the natural passing of time. The other great hallmark of Latour is its consistency – the wines are consistently impressive, irrespective of whether the vintage is great, mediocre or even slightly disappointing. The 47 hectares which surround the Château are called "l'Enclos". Only the grapes from these 47 hectares make it into the "Grand Vin de Château Latour". The soils vary from clayey gravel on a subsoil of marly sediment, gravelly sands with small pebbles and marly clay which suits Merlot. All the soils are characterised by excellent drainage which encourages the vines to develop deep roots in search of nutrients and water.

Frédéric Engerer, the President, along with the vineyard manager, Domingo Sanchez and the cellar-master, Pierre-Henri Chabot have ensured that grape selection is paramount, and only grapes from vines that are at least 25 years old are allowed into the Grand Vin. Hand-harvesting and a first sorting are carried out by 200 pickers, before being transported to the winery for the second round of sorting and destemming. The winery contains 66 temperature controlled stainless steel vats which enables the separate vinification of different plots. By December the wine is in new oak barrels, where it remains for about 18 months with rackings about every three months. Blending is completed by March the following year, with fining with egg white, but since 1999 there is no filtration and the wine is returned to vat for a month prior to bottling.

As Stephen Brook writes in "The Complete Bordeaux"; "No other Médoc wine can match Latour for power, depth of flavour, and grandeur.

**Château Lafite-Rothschild 1996**

Pauillac, 1er cru classé  
In original six-bottle wooden cases

198 12 bottles per lot £6,000-8,000  
€6,800-9,000

**Château Margaux 1996**

Margaux, 1er cru classé  
In original wooden case

199 6 bottles per lot £2,000-2,500  
€2,300-2,800

PRODUCE OF FRANCE  
MIS EN BOUTEILLE AU CHATEAU



GRAND VIN  
DE  
CHATEAU LATOUR  
PREMIER GRAND CRU CLASSE  
PAUILLAC  
1990



Alc. 12.5% Vol

DEPOSE

APPELLATION PAUILLAC CONTROLEE  
MAISON FONDÉE EN 1813

Selected and Shipped by :

THE WINE SOCIETY STEVENAGE HERTFORDSHIRE

	<b>Château Léoville-Las-Cases 1996</b> <i>Saint-Julien, 2ème cru classé</i> <i>In original wooden case</i>		<b>Château Lafite-Rothschild 1998</b> <i>Pauillac, 1er cru classé</i> <i>In original wooden case</i>	
200	6 bottles	<i>per lot</i> £800-1,000 €900-1,100	208	12 bottles
				<i>per lot</i> £4,500-5,500 €5,100-6,200
	<b>Château Ducru-Beaucaillou 1996</b> <i>Saint-Julien, 2ème cru classé</i> <i>Not in original wooden case</i>		<b>Château Palmer 1998</b> <i>Cantenac (Margaux), 3ème cru classé</i> <i>In original wooden case</i>	
201	6 bottles	<i>per lot</i> £700-900 €790-1,000	209	12 bottles
				<i>per lot</i> £1,200-1,500 €1,400-1,700
	<b>Château Cos d'Estournel 1996</b> <i>Saint-Estèphe, 2ème cru classé</i> <i>In original wooden case with cracked lid</i>		<b>Vieux-Château-Certain 1998</b> <i>Pomerol</i> <i>In original wooden case</i>	
202	12 bottles	<i>per lot</i> £800-1,200 €900-1,300	210	6 bottles
				<i>per lot</i> £600-750 €680-840
	<b>Château Beychevelle 1996</b> <i>Saint-Julien, 4ème cru classé</i> <i>In original wooden case</i>		<b>Château La Fleur-Pétrus 1998</b> <i>Pomerol</i> <i>In original wooden case</i>	
203	12 bottles	<i>per lot</i> £550-650 €620-730	211	6 bottles
				<i>per lot</i> £600-750 €680-840
	<b>Château Lynch-Bages 1996</b> <i>Pauillac, 5ème cru classé</i> <i>In original wooden case</i>		<b>Château Léoville-Barton</b> <i>Saint-Julien, 2ème cru classé</i>	
204	12 bottles	<i>per lot</i> £1,000-1,500 €1,200-1,700	<b>1998</b>	(12)
			<b>1999</b>	(12)
			<i>In original wooden cases</i>	
			212	24 bottles
				<i>per lot</i> £800-1,000 €900-1,100
	<b>Les Forts de Latour 1996</b> <i>Pauillac</i> <i>In original wooden case</i>		<b>Château d'Issan 1999</b>	(12)
205	12 bottles	<i>per lot</i> £1,100-1,400 €1,300-1,600	<b>Château d'Angludet 1999</b>	(12)
			<i>In original wooden cases</i>	
			213	24 bottles
				<i>per lot</i> £480-600 €540-670
	<b>Château d'Issan 1996</b>	(12)	<b>Château Rauzan-Ségla 2000</b>	
	<b>Château Batailley 1996</b>	(12)	<i>Margaux, 2ème cru classé</i> <i>In original wooden case</i>	
	<i>In original wooden cases</i>			
206	24 bottles	<i>per lot</i> £600-800 €680-900	214	12 bottles
				<i>per lot</i> £600-800 €680-900
	<b>Château Grand-Puy-Lacoste 1996</b> <i>Not in original wooden case</i>	(6)	<b>Château Palmer 2000</b> <i>Cantenac (Margaux), 3ème cru classé</i> <i>In original wooden case</i>	
	<b>Château Belgrave 1996</b>	(12)		
	<i>In original wooden case</i>			
207	18 bottles	<i>per lot</i> £550-700 €620-780	215	6 bottles
				<i>per lot</i> £1,000-1,300 €1,200-1,500



**Pavillon Rouge du Château Margaux 2000***Margaux*

216	6 bottles	<i>per lot</i> £550-700 €620-780
-----	-----------	-------------------------------------

**Château Pavie 2000***Saint-Emilion, 1er grand cru classé**In original wooden case*

217	12 bottles	<i>per lot</i> £3,200-4,000 €3,600-4,500
-----	------------	---

**Château Monbousquet 2000***Saint-Emilion, grand cru**In original wooden case*

218	12 bottles	<i>per lot</i> £550-750 €620-840
-----	------------	-------------------------------------

**Vieux-Château-Certan 2000***Pomerol**In original wooden case*

219	6 bottles	<i>per lot</i> £600-750 €680-840
-----	-----------	-------------------------------------

**Château Haut-Bages-Libéral 2000**

(6)

**Château Belgrave 2000**

(12)

*In original wooden cases*

220	18 bottles	<i>per lot</i> £400-500 €450-560
-----	------------	-------------------------------------

**AN EXCELLENT RANGE OF CLASSED GROWTH BORDEAUX**

Lying in Corsham, Wiltshire (Octavian)

**Château Margaux 1983***Margaux, 1er cru classé**In original wooden case. Good appearance. Levels base of neck or better*

221	12 bottles	<i>per lot</i> £3,000-4,000 €3,400-4,500
-----	------------	---

**Château Canon de Brem 1989***In original wooden case*

(12)

**Château Labégorce-Zédé 1999***In original wooden case*

(12)

**Château Cissac 2000***In original wooden case*

(12)

222	36 bottles	<i>per lot</i> £500-650 €560-730
-----	------------	-------------------------------------

**Château Mouton-Rothschild 1990***Pauillac, 1er cru classé**In original wooden case*

223	12 bottles	<i>per lot</i> £2,600-3,400 €3,000-3,800
-----	------------	---

**Château Margaux**

There have been moments of startling brilliance, such as the monumental 1945 or 1953 vintages and since the Mentzelopoulos family took over in the late 1970's the wines have been on magnificent form; the wines from the 1980's and 1990's are nothing short of spectacular. The wines of Château Margaux are celebrated for their elegance and finesse and for their inimitable fragrance. The Ginestet family became majority shareholders of the Château in 1949. In 1977 Pierre Ginestet decided to sell the property to André Mentzelopoulos for the sum of 72 million francs. André invested heavily in the Château. In the vineyards, new drainage systems were installed and new vines were planted. Improvements were made in the cellar in conjunction with the oenologist Emile Peynaud who helped with the reintroduction of Pavillon Rouge. The success of the 1978 vintage was testament to the hard work and investment undertaken at the property and the high quality reputation of Château Margaux was rapidly re-established.

Following his untimely death in 1980, André's daughter, Corinne, and widow Laura took over the running of the estate. Paul Pontallier was appointed Director and since 1983 they have worked tirelessly to promote and ensure the smooth running of the property. Paul Pontallier sadly passed away in 2016.

The majority of the vineyards are on deep gravel and gravely clay soils which are ideally suited to Cabernet Sauvignon. Merlot is planted on soils which have higher content of clay and limestone. Average yields are around 40 hectolitres per hectare. The grapes are strictly sorted in the vineyard by highly trained pickers. The wine is aged for between eighteen to twenty four months in new medium-toast barriques, the majority of which are made by the estate's own cooper.

**Pavillon Rouge du Château Margaux 1990***Margaux**In original wooden case*

224	12 bottles	<i>per lot</i> £700-900 €790-1,000
-----	------------	---------------------------------------

**Château Ducru-Beaucaillou 1995***Saint-Julien, 2ème cru classé**In original wooden case*

225	12 bottles	<i>per lot</i> £1,000-1,400 €1,200-1,600
-----	------------	---

**Château Léoville-Las-Cases 1995***Saint-Julien, 2ème cru classé**In original wooden case*

226	12 bottles	<i>per lot</i> £1,000-1,400 €1,200-1,600
-----	------------	---

	<b>Château Langoa-Barton 1995</b>	(12)		<b>Château Cos d'Estournel 1996</b>			
	<b>Château Haut-Bailly 1995</b>	(12)		<i>Saint-Estèphe, 2ème cru classé</i>			
	<i>In original wooden cases</i>			<i>In original wooden case</i>			
227	24 bottles		per lot £700-900 €790-1,000	235	12 bottles		per lot £800-1,200 €900-1,300
	<b>Château Belair 1995</b>			<b>Château Lynch-Bages 1996</b>			
	<i>In original wooden case</i>	(12)		<i>Pauillac, 5ème cru classé</i>			
	<b>Château L'Arrosée 1995</b>	(6)		<i>In original wooden case</i>			
	<b>Château Certan-de-May 1995</b>	(6)		236	12 bottles		per lot £1,000-1,500 €1,200-1,700
228	24 bottles		per lot £655-750 €740-840				
	<b>Château d'Angludet</b>			<b>Pavillon Rouge du Château Margaux 1996</b>			
	<i>Cantenac (Margaux), cru bourgeois exceptionnel</i>			<i>Margaux</i>			
	<b>1995</b>	(12)		<i>In original wooden case</i>			
	<b>1996</b>	(12)		237	12 bottles		per lot £700-900 €790-1,000
	<b>1998</b>	(12)					
	<i>In original wooden cases, 1996 slightly damaged</i>						
229	36 bottles		per lot £550-700 €620-780		<b>Château Belgrave 1996</b>		
					<i>In original wooden case</i>		(12)
	<b>Château Lafite-Rothschild 1996</b>				<b>Château d'Angludet 1996</b>		(2)
	<i>Pauillac, 1er cru classé</i>				<b>Château de Pez 1996</b>		(2)
	<i>In original six-bottle wooden cases</i>				<b>Château Batailley 1996</b>		(2)
	230	12 bottles	per lot £6,000-8,000 €6,800-9,000		<b>Château Cantemerle 1996</b>		(2)
					<b>Château d'Issan 1996</b>		(2)
					<b>Château Duhart-Milon 1996</b>		(2)
				238	24 bottles		per lot £500-700 €560-780
	<b>Château Latour 1996</b>						
	<i>Pauillac, 1er cru classé</i>				<b>Château Latour 1998</b>		
	<i>In original wooden case</i>				<i>Pauillac, 1er cru classé</i>		
	231	6 bottles	per lot £2,500-3,000 €2,800-3,400		<i>In original wooden case</i>		
				239	12 bottles		per lot £3,000-5,000 €3,400-5,600
	<b>Château Margaux 1996</b>						
	<i>Margaux, 1er cru classé</i>				<b>Château Ducru-Beaucaillou 1998</b>		
	<i>In original wooden case</i>				<i>Saint-Julien, 2ème cru classé</i>		
	232	6 bottles	per lot £2,000-2,500 €2,300-2,800		<i>In original wooden case</i>		
				240	12 bottles		per lot £700-900 €790-1,000
	<b>Château Ducru-Beaucaillou 1996</b>						
	<i>Saint-Julien, 2ème cru classé</i>				<b>Château Léoville-Las-Cases 1998</b>		
	<i>In original wooden case</i>				<i>Saint-Julien, 2ème cru classé</i>		
	233	6 bottles	per lot £700-900 €790-1,000		<i>In original wooden case</i>		
				241	12 bottles		per lot £800-1,200 €900-1,300
	<b>Château Léoville-Barton 1996</b>						
	<i>Saint-Julien, 2ème cru classé</i>				<b>Château Palmer 1998</b>		
	<i>In original wooden case</i>				<i>Cantenac (Margaux), 3ème cru classé</i>		
	234	12 bottles	per lot £500-700 €560-780		<i>In original wooden case</i>		
				242	12 bottles		per lot £1,200-1,600 €1,400-1,800

**Château Haut-Bailly 1998** (12)  
**Château Grand-Puy-Lacoste 1999** (12)  
*In original wooden cases*

243 24 bottles *per lot* £750-950  
 €840-1,100

**Château Duhart-Milon 1998** (12)  
*In original wooden case*  
**Château Duhart-Milon 2000** (6)  
*In original wooden case*

244 18 bottles *per lot* £650-750  
 €730-840

**Pavillon Rouge du Château Margaux 1999** +252  
*Margaux*  
*In original wooden case*

245 12 bottles *per lot* £600-800  
 €680-900

**Château Margaux 2000**  
*Margaux, 1er cru classé*  
*In original wooden case*

246 6 bottles *per lot* £2,800-3,200  
 €3,200-3,600

**Château Palmer 2000**  
*Cantenac (Margaux), 3ème cru classé*  
*In original wooden case*

247 6 bottles *per lot* £1,000-1,300  
 €1,200-1,500

**Alter Ego de Palmer 2000**  
*Cantenac (Margaux)*  
*In original wooden case*

248 12 bottles *per lot* £500-700  
 €560-780

**Château Lynch-Bages 2000** (6)  
*In original wooden case*  
**Château Ducru-Beaucaillou 2000** (6)  
*Not in original wooden case*

249 12 bottles *per lot* £1,200-1,500  
 €1,400-1,700

**MOUTON ROTHSCHILD 1989**

Lying in Corsham, Wiltshire (Octavian)

**Château Mouton-Rothschild 1989**  
*Pauillac, 1er cru classé*  
*In original wooden twelve-bottle case. Original tissues.*  
*Good appearance. Levels base of neck or better*

250 6 bottles *per lot* £2,000-2,600  
 €2,300-2,900

**1990 BORDEAUX**

Lying in Corsham, Wiltshire (Octavian)

**Château Cantenac-Brown 1990**  
*Cantenac (Margaux), 3ème cru classé*  
*In individual, original wooden cases*

+251 2 jeroboams *per lot* £600-800  
 €680-900

Lying in Corsham, Wiltshire (Octavian)  
*Offered in bond, available duty-paid*

**Château Certan de May 1990**  
*Pomerol*  
*In original wooden case*

+252 12 bottles *per lot* £700-800  
 €790-900

**FINE BORDEAUX**

Lying in Corsham, Wiltshire (Octavian)

*Offered in bond, available duty-paid*

**Château Margaux 1997**  
*Margaux, 1er cru classé*  
*In original wooden case*

+253 12 bottles *per lot* £2,000-2,500  
 €2,300-2,800

**Château Léoville-Las-Cases 1997**

*Saint-Julien, 2ème cru classé*  
*In original wooden case*

+254 12 bottles *per lot* £650-850  
 €730-950

**Château Léoville-Barton 1997** (12)

**Château Durfort-Vivens 1997** (12)

**Château Monbousquet 1999** (12)

*In original wooden cases*

+255 36 bottles *per lot* £950-1,100  
 €1,100-1,200

**Château Margaux 1999**

*Margaux, 1er cru classé*  
*In original wooden case*

+256 12 bottles *per lot* £2,800-3,400  
 €3,200-3,800

Lying in Corsham, Wiltshire (Octavian)

*Offered in bond, available duty-paid*

**Château Margaux 1997**

*Margaux, 1er cru classé*  
*In original wooden case*

+257 12 bottles *per lot* £2,200-2,800  
 €2,500-3,100

	<b>Château Durfort-Vivens 1997</b>	(12)		<b>Château Grand-Puy-Ducasse</b>	
	<b>Château Léoville Barton 1999</b>	(12)		<b>2005</b>	
	<i>In original wooden cases</i>			<i>In original wooden case</i>	(12)
*258	24 bottles	<i>per lot</i> £600-800		<b>2010</b>	magnum (6)
		€680-900	*269	6 magnums and 12 bottles	<i>per lot</i> £600-800
					€680-900
	<b>Château Léoville-Las-Cases 1997</b>	(12)			
	<b>Château Palmer 1999</b>	(12)		<b>FINE BORDEAUX INCLUDING LAFITE 2006</b>	
	<i>In original wooden cases</i>			Lying in Corsham, Wiltshire (Octavian)	
*259	24 bottles	<i>per lot</i> £2,200-2,900		<i>Offered in bond, available duty-paid</i>	
		€2,500-3,200		<b>Château Lafite-Rothschild 2006</b>	
	<b>Château Latour 1998</b>			<i>Pauillac, 1er cru classé</i>	
	<i>Pauillac, 1er cru classé</i>			<i>In original wooden case</i>	
	<i>In original wooden case</i>		*270	6 bottles	<i>per lot</i> £2,000-2,500
*260	12 bottles	<i>per lot</i> £3,000-4,000			€2,300-2,800
		€3,400-4,500		<b>Château Mouton-Rothschild 2006</b>	
	<b>Château Latour 1999</b>			<i>Pauillac, 1er cru classé</i>	
	<i>Pauillac, 1er cru classé</i>			<i>In original wooden case</i>	
	<i>In original wooden case</i>		*271	6 bottles	<i>per lot</i> £1,500-1,800
*261	12 bottles	<i>per lot</i> £3,000-4,000			€1,700-2,000
		€3,400-4,500		<b>Château Pichon-Longueville, Lalande 2006</b>	
				<i>Pauillac, 2ème cru classé</i>	
				<i>In original wooden case</i>	
	<b>BORDEAUX FROM THE EARLY 2000'S</b>			*272	12 bottles
	Lying in Corsham, Wiltshire (Octavian)				<i>per lot</i> £700-800
	<b>Château Valrose Cuvée Alienor 2003</b>				€790-900
	<i>Saint-Estèphe</i>			<b>Château Léoville-Las-Cases 2006</b>	
	<i>In original cartons</i>			<i>Saint-Julien, 2ème cru classé</i>	
	Tasting note: Attractive deep colour. Warm, earthy and powerful spicy aromas. Fairly sweet and soft, black fruit flavours. Moderate tannins, crisp acidity and good balance. D.E.			<i>In original wooden case</i>	
*262	36 bottles	<i>per lot</i> £400-500	*273	12 bottles	<i>per lot</i> £800-1,000
		€450-560			€900-1,100
*263	36 "			Lying in Corsham, Wiltshire (Octavian)	
*264	36 "			<b>Château Quinault L'Enclos 2006</b>	
*265	36 "			<i>Saint-Emilion, grand cru classé</i>	
*266	36 "			<i>In original wooden cases</i>	
	Lying in Corsham, Wiltshire (Octavian)		274	36 bottles	<i>per lot</i> £600-800
	<b>Château Quinault L'Enclos 2003</b>				€680-900
	<i>In original wooden case</i>	(12)	275	36 "	
	<b>Château Clos de Sprie 2004</b>	(12)		Lying in Corsham, Wiltshire (Octavian)	
	<i>In original carton</i>	(12)		<i>Offered in bond, available duty-paid</i>	
*267	24 bottles	<i>per lot</i> £500-700		<b>Château Ausone 2008</b>	
		€560-780		<i>Saint-Emilion, 1er grand cru classé</i>	
				<i>Not in original wooden case</i>	
	<b>Château Gruaud-Larose 2005</b>	impériale (1)	*276	1 magnum	<i>per lot</i> £950-1,150
	<b>Château D'Armailhac 2005</b>	impériale (1)			€1,100-1,300
	<i>In original wooden cases</i>				
*268	2 imperials	<i>per lot</i> £850-1,000			
		€960-1,100			

## CHATEAU D'YQUEM

Lying in Corsham, Wiltshire (Octavian)

### Château d'Yquem 1961

*Sauternes, 1er grand cru classé*

*Not in original wooden cases. Corroded capsules. Bin-soiled, damp-affected, slightly damaged labels. Levels top-shoulder or better*

277	6 bottles		<i>per lot</i> £1,800-2,400 €2,100-2,700
278	6	"	
279	6	"	
280	6	"	

Lying in Corsham, Wiltshire (Octavian)

### Château d'Yquem 1983

*Sauternes, 1er grand cru classé.*

*In original wooden case. Taiwan import back label.*

*281	1 double magnum		<i>per lot</i> £750-1,000 €840-1,100
------	-----------------	--	---

## FINE SAUTERNES

Lying in Corsham, Wiltshire (Octavian)

### Château Coutet 1988

*In original wooden case*

(12)

### Château Lamothe-Guignard 1988

*In original wooden case*

(12)

282	24 bottles		<i>per lot</i> £600-750 €680-840
-----	------------	--	-------------------------------------

### Château Rieussec 1988

*In original wooden case*

(12)

### Château Suduiraut 1989

(6)

283	18 bottles		<i>per lot</i> £600-700 €680-780
-----	------------	--	-------------------------------------

### Château Climens 1989

*Barsac, 1er cru classé*

*In original wooden case*

284	12 bottles		<i>per lot</i> £650-850 €730-950
-----	------------	--	-------------------------------------

### Château Coutet 1989

(2)

### Château d'Arche 1989

half (3)

### Château Rabaud-Promis 1989

half (3)

### Château La Tour Blanche 1989

half (3)

### Château Rieussec 1997

(2)

### Château Doisy-Daëne 1997

(2)

### Château Doisy-Védrines 1997

(2)

### Château Lafaurie-Peyraguey 1997

(2)

### Château Guiraud 1997

(2)

### Château Climens 1997

(2)

285	14 bottles and 9 half-bottles		<i>per lot</i> £550-700 €620-780
-----	-------------------------------	--	-------------------------------------

Lying in Corsham, Wiltshire (Octavian)

### Château Rieussec 1989

*In original wooden case*

(12)

### Château Doisy-Daëne 1997

(2)

### Château Doisy-Védrines 1997

(2)

### Château Lafaurie-Peyraguey 1997

(2)

### Château Guiraud 1997

(2)

### Château Rieussec 1997

(2)

### Château Climens 1997

(2)

286	24 bottles		<i>per lot</i> £540-700 €610-780
-----	------------	--	-------------------------------------

## SAUTERNES AND DESSERT WINES

Lying in Corsham, Wiltshire (Octavian)

### Château Guiraud 1997

*In original wooden case*

(12)

### Château Doisy Daëne 2008

*In original carton*

(12)

287	24 bottles		<i>per lot</i> £500-700 €560-780
-----	------------	--	-------------------------------------

### Château de Fargues 2006

*Fargues (Sauternes), cru bourgeois*

*In original wooden cases*

288	12 bottles		<i>per lot</i> £500-700 €560-780
-----	------------	--	-------------------------------------

289	12	"	
-----	----	---	--

290	12	"	
-----	----	---	--

### Château Siglas-Rabaud 1997

(22)

### Domaine de Petit Metris, Quarts de Chaume 1997

(12)

*Not in original cartons*

291	34 bottles		<i>per lot</i> £550-750 €620-840
-----	------------	--	-------------------------------------

## FINE BURGUNDY

Lying in Corsham, Wiltshire (Octavian)

### Domaine de la Romanée-Conti, Grands-Echézeaux 1979

*Grand Cru, Côte de Nuits*

*Slightly worn capsule. Leroy slip label. Bin-soiled, damp-affected label. Level: 3.5cms below base of cork*

292	1 bottle		<i>per lot</i> £800-1,000 €900-1,100
-----	----------	--	---

Lying in Corsham, Wiltshire (Octavian)

### Domaine Francois Lamarche, Clos de Vougeot 1996

*Grand Cru, Côte de Nuits*

*In original carton*

293	12 bottles		<i>per lot</i> £500-600 €560-670
-----	------------	--	-------------------------------------

	<b>L Boillot, Gevrey-Chambertin, Les Cherbaudes 1996</b> (6)			
	<b>A Burguet, Gevrey-Chambertin, Vieilles Vignes 1996</b> (6)	‡302	24 bottles	<i>per lot</i> £1,200-1,600 €1,400-1,800
	<b>Domaine de la Pousse d'Or, Pommard, Les Jarollières 1996</b> (6)			
	<b>Louis Jadot, Beaune, Grèves 1996</b> (12)	‡303	24 "	
294	<b>A Morot, Beaune, Teurons 1996</b> (6)			
	36 bottles			<i>per lot</i> £750-900 €840-1,000
	Lying in Corsham, Wiltshire (Octavian)			
	<b>Louis Jadot, Clos de la Roche 1996</b> (6)	‡304	24 bottles	<i>per lot</i> £1,200-1,600 €1,400-1,800
	<i>Grand Cru, Côte de Nuits</i>			
295	12 bottles	‡305	24 "	
				<i>per lot</i> £700-900 €790-1,000
	<b>Francois Lamarche, Clos de Vougeot 1996</b>			
	<i>Grand Cru, Côte de Nuits</i>			
296	12 bottles	‡306	12 bottles	<i>per lot</i> £600-800 €680-900
		‡307	12 "	
	<b>Louis Jadot, Bonnes-Mares 1996</b>			
	<i>Grand Cru, Côte de Nuits</i>			
297	6 bottles			<i>per lot</i> £1,000-1,300 €1,200-1,500
	<b>J Chauvenet, Nuits-Saint-Georges, Vaucraains 1996</b> (6)			
	<b>L Boillot, Gevrey-Chambertin, Cherbaudes 1996</b> (6)	‡308	12 bottles	<i>per lot</i> £1,400-1,600 €1,600-1,800
	<b>L Jadot, Beaune, Grèves 1996</b> (12)	‡309	12 "	
	<b>La Chablisienne, Chablis, Beauroy 1996</b> (6)			
	<b>P Morey, Meursault, Tessons 1996</b> (12)			
298	42 bottles			<i>per lot</i> £950-1,200 €1,100-1,300
	<b>Louis Jadot, Chevalier-Montrachet, Les Demoiselles 1996</b>			
	<i>Grand Cru, Côte de Beaune</i>			
299	6 bottles			<i>per lot</i> £900-1,100 €1,100-1,200
	<b>FINE RED BURGUNDY FROM LOUIS JADOT FROM THE 2011 AND 2012 VINTAGES</b>			
	Lying in Corsham, Wiltshire (Octavian)			
	<i>Offered in-bond, available duty-paid</i>			
	<b>Louis Jadot, Chambertin 2011</b>			
	<i>Grand Cru, Côte de Nuits</i>			
	<i>In original wooden, six-bottle cases.</i>			
‡300	12 bottles			<i>per lot</i> £1,200-1,600 €1,400-1,800
‡301	12 "			
	<b>Louis Jadot, Chapelle-Chambertin 2011</b>			
	<i>Grand Cru, Côte de Nuits</i>			
	<i>In original wooden, six-bottle cases.</i>			
	<b>Louis Jadot, Gevrey-Chambertin Clos St-Jacques 2011</b>			
	<i>1er Cru, Côte de Nuits</i>			
	<i>In original wooden, six-bottle cases.</i>			
	<b>Louis Jadot, Charmes-Chambertin 2012</b>			
	<i>Grand Cru, Côte de Nuits</i>			
	<i>In original wooden, six-bottle cases.</i>			
	<b>Louis Jadot, Bâtard-Montrachet 2011</b>			
	<i>Grand Cru, Côte de Beaune</i>			
	<i>In original wooden, six-bottle cases.</i>			
	<b>WHITE BURGUNDY FROM TOP PRODUCERS</b>			
	Lying in Corsham, Wiltshire (Octavian)			
	<b>Girardin, Meursault Les Charmes 1996</b> (1)			
	<i>Congé capsule. Bin-soiled label</i>			
	<b>Niellon, Chassagne-Montrachet Clos de Maltroie 1999</b> (2)			
	<i>Bin-soiled labels</i>			
	<b>Morey-Coffinet, Chassagne-Montrachet Les Caillerets 2000</b> (2)			
	<i>Bin-soiled labels</i>			
	<b>Niellon, Chassagne-Montrachet Clos de Maltroie 2006</b> (1)			
	<i>Bin-soiled labels</i>			
	<b>J.M. Boillot, Puligny-Montrachet Les Combettes 2006</b> (3)			
	<i>Bin-soiled labels</i>			
	<b>Sauzet, Bâtard-Montrachet 2007</b> (1)			
	<i>Bin-soiled labels</i>			
	<b>Jadot, Chevalier-Montrachet Les Demoiselles 2007</b> (4)			
	<i>Bin-soiled labels</i>			
	<b>Drouhin, Puligny-Montrachet Folataires 2008</b> (1)			
	<i>Bin-soiled labels</i>			
	15 bottles	310		<i>per lot</i> £950-1,100 €1,100-1,200

	<b>Louis Latour,</b> <b>Meursault Genevrières 2000</b> <i>Bin-soiled labels</i>	(5)			
	<b>Bâtard-Montrachet 2003</b> <i>Congé capsules. Slightly bin-soiled labels</i>	(5)	316	11 bottles	<i>per lot</i> £550-650 €620-730
311	10 bottles				<i>per lot</i> £550-650 €620-730
	<b>Domaine des Comtes Lafon Meursault Clos de la Barre 2007</b> <i>1er Cru, Côte de Beaune</i> <i>Two slightly bin-soiled labels.</i>				
312	10 bottles		317	13 bottles	<i>per lot</i> £500-600 €560-670
	<b>Drouhin, Marquis de Laguiche, Montrachet 2009</b> <i>Grand Cru, Côte de Beaune</i> <i>Congé capsules. Slightly bin-soiled labels. Levels: 1cm below base of corks or better</i>				
313	10 bottles		318	12 bottles	<i>per lot</i> £2,600-3,500 €3,000-3,900
	<b>Drouhin, Marquis de Laguiche, Montrachet 2009</b> <i>Grand Cru, Côte de Beaune</i> <i>Congé capsules. Slightly bin-soiled labels. Levels: 1cm below base of corks</i>				
314	12 bottles		319	18 half bottles	<i>per lot</i> £3,000-4,000 €3,400-4,500
	<b>Faiveley,</b> <b>Bienvenues-Bâtard-Montrachet 2010</b> <b>Corton-Charlemagne 2010</b> <i>All above with slightly bin-soiled labels</i>	(5) (4)			
315	9 bottles				<i>per lot</i> £900-1,100 €1,100-1,200
<p><b>Joseph Drouhin</b></p> <p>In 1880 Joseph Drouhin established his own négociant firm and acquired the old cellars of the Dukes of Burgundy at Collégiale Notre-Dame. His son Maurice began buying vineyards, starting with Beaune Clos des Mouches and he also had distribution rights for a portion of the Domaine de la Romanée Conti. Robert Drouhin, the adopted heir, took the reins in 1957 and now looks over the Domaine which is run by his children. Laurence Jobard consulted on the wine-making from 1973 until 2005 and many great vintages were produced under his careful watch. Great names in both the Côtes are produced by Drouhin; Chambertin and Clos de Bèze, Bonnes Mares and Musigny, Corton-Charlemagne and Bâtard-Montrachet. The family produce Montrachet on behalf of the Domaine Marquis de Laguiche, who own a 2.06 hectares of the Grand Cru. Stellar vintages such as 2000, 2005 and 2009 have garnered praise, with Robert Parker describing the 2009 as 'exploding' from the glass to reveal a 'totally engaging wine'.</p>					
	<b>Domaine Leflaive, Puligny-Montrachet Clavoillon 2010</b> <b>2011</b>	(9) (2)			
	<b>Domaine Leflaive,</b> <b>Bienvenues-Bâtard-Montrachet 2011</b> <b>Puligny-Montrachet Clavoillon 2011</b> <b>Domaine des Lambrays, Puligny-Montrachet Folatières 2011</b>	(2) (3) (8)			
	<b>Domaine Ramonet, Puligny-Montrachet La Boudriotte 2011</b> <i>1er Cru, Côte de Beaune</i> <i>Not in original carton. Slightly damp-affected labels, two slightly damaged.</i>				
	<b>Drouhin, Meursault Perrières 2011</b> <i>1er Cru, Côte de Beaune</i> <i>Not in original carton. Congé capsules. Slightly bin-soiled labels</i>				
	<b>Comtes Lafon, Meursault Perrières 1999</b> <b>Les Charmes 1999</b>	(3) (3)			
	<b>Comtes Lafon, Meursault, Perrières 2000</b> <b>Les Charmes 2000</b>	(3) (3)			
	<b>Comtes Lafon, Meursault Perrières 2001</b> <i>1er Cru, Côte de Beaune</i> <i>In original carton</i>				
	<b>Comtes Lafon, Meursault Perrières 2002</b> <b>Les Charmes 2002</b> <b>Les Genevrières 2002</b>	(2) (2) (1)			
	<b>Lying in Corsham, Wiltshire (Octavian)</b> <i>Lots 323 and 324 are offered in bond, available duty-paid</i>				
	<b>Comtes Lafon, Meursault Perrières 1999</b> <b>Les Charmes 1999</b>	(3) (3)	320	6 bottles	<i>per lot</i> £750-950 €840-1,100
	<b>Comtes Lafon, Meursault, Perrières 2000</b> <b>Les Charmes 2000</b>	(3) (3)	321	6 bottles	<i>per lot</i> £850-1,150 €960-1,300
	<b>Comtes Lafon, Meursault Perrières 2001</b> <i>1er Cru, Côte de Beaune</i> <i>In original carton</i>		322	12 bottles	<i>per lot</i> £2,200-3,000 €2,500-3,400
	<b>Comtes Lafon, Meursault Perrières 2002</b> <b>Les Charmes 2002</b> <b>Les Genevrières 2002</b>	(2) (2) (1)	*323	5 bottles	<i>per lot</i> £1,100-1,500 €1,300-1,700



Marquis

GRANDS VINS

2009

DE BOURGOGNE

Joseph Drouhin



Montrachet

GRAND CRU

Marquis de Laguiche



	<b>Comtes Lafon, Meursault Clos de La Barre 2002</b>	(2)			
	<b>Meursault La Goutte d'Or 2002</b>	(2)			
	<b>Meursault 2002</b>	(3)			
+324	7 bottles		<i>per lot</i>	£700-900 €790-1,000	
	Lying in Corsham, Wiltshire (Octavian)				
	<b>Vincent Girardin, Bourgogne Chardonnay Vieilles Vignes 2011</b>				
	<i>In original cartons</i>				
+325	48 bottles		<i>per lot</i>	£400-500 €450-560	
	<b>RHONE WINES FROM EXCEPTIONAL PRODUCERS</b>				
	Lying in Corsham, Wiltshire (Octavian)				
	<b>Paul Jaboulet-Ainé, Hermitage La Chapelle 1995</b>	(12)			
	<b>Domaine du Vieux Télégraphe, Châteauneuf-du- Pape 1995</b>				
	<i>In original wooden case</i>	(12)			
326	24 bottles		<i>per lot</i>	£700-850 €790-950	
	<b>Château de Beaucastel, Châteauneuf-du-Pape Blanc, Roussane Vieilles Vignes 1996</b>	(6)			
	<b>Paul Jaboulet-Ainé, Cornas Domaine Saint Pierre 1997</b>	(6)			
	<b>Paul Jaboulet-Ainé, Côte-Rôtie, Les Jumelles 1997</b>	(12)			
	<b>Paul Jaboulet-Ainé, Crozes-Hermitage, Domaine de Roure 1997</b>	(6)			
	<b>Château de Beaucastel, Châteauneuf-du-Pape 1997</b>	(6)			
	<b>Paul Jaboulet-Ainé, Hermitage Blanc, Le Chevalier de Stérimberg 1997</b>	(12)			
327	48 bottles		<i>per lot</i>	£1,000-1,400 €1,200-1,600	
	<b>Chave, Hermitage 1997</b>				
	<i>Rhône</i>				
	<i>In original carton</i>				
328	6 bottles		<i>per lot</i>	£600-750 €680-840	
	<b>Hermitage La Chapelle 1997</b>				
	<i>Rhône, Paul Jaboulet Aîné</i>				
	<i>In original six-bottle wooden cases</i>				
329	12 bottles		<i>per lot</i>	£500-600 €560-670	
	<b>Paul Jaboulet-Ainé, Hermitage La Chapelle 1998</b>	(6)			
	<b>Paul Jaboulet-Ainé, Cornas Domaine Saint Pierre 1998</b>	(6)			
	<b>Château de Beaucastel, Châteauneuf-du-Pape 1998</b>	(6)			
	<b>Domaine de la Janasse, Châteauneuf-du-Pape, Cuvée Chaupin 1998</b>	(6)			
330	24 bottles		<i>per lot</i>	£750-900 €840-1,000	
	<b>Paul Jaboulet-Ainé, Hermitage La Chapelle 2000</b>	(12)			
	<b>Château de Beaucastel, Châteauneuf-du-Pape 2000</b>	(6)			
	<i>In original wooden cases</i>				
331	18 bottles		<i>per lot</i>	£600-750 €680-840	
	<b>Château de Beaucastel, Châteauneuf-du-Pape Blanc, Roussane Vieilles Vignes 2000</b>	(6)			
	<b>Clos des Papes, Châteauneuf-du-Pape Blanc 2000</b>	(12)			
332	18 bottles		<i>per lot</i>	£600-750 €680-840	
	<b>Château Mont Redon, Châteauneuf-du-Pape 2000</b>	(12)			
	<b>Clos des Papes, Châteauneuf-du-Pape 2000</b>	(12)			
	<i>In original cartons</i>				
333	24 bottles		<i>per lot</i>	£550-700 €620-780	
	Lying in Corsham, Wiltshire (Octavian)				
	<b>Hermitage La Chapelle</b>				
	<i>Rhône, Paul Jaboulet Aîné</i>				
	<b>1995</b>	(12)			
	<b>1996</b>	(12)			
334	24 bottles		<i>per lot</i>	£900-1,100 €1,100-1,200	
	Lying in Corsham, Wiltshire (Octavian)				
	<b>Domaine du Vieux Télégraphe, Châteauneuf-du- Pape 1995</b>	(12)			
	<b>Paul Jaboulet Aîné, Côte-Rôtie, Les Jumelles 1997</b>	(12)			
	<b>Paul Jaboulet Aîné, Cornas, Domaine St Pierre 1997</b>	(6)			
	<b>Domaine Roure, Crozes-Hermitage 1997</b>	(6)			
	<b>Paul Jaboulet Aîné, Cornas, Domaine St Pierre 1998</b>	(6)			
335	42 bottles		<i>per lot</i>	£650-800 €730-900	

	<b>Château de Beaucastel, Châteauneuf-du-Pape Blanc, Roussane Vieilles Vignes 1996</b> (6)				
	<b>Château de Beaucastel, Châteauneuf-du-Pape 1997</b> (6)				
	<b>Château de Beaucastel, Châteauneuf-du-Pape Blanc, Roussane Vieilles Vignes 1997</b> (6)	•+344	24 bottles		per lot £400-600 €450-670
	<b>Château de Beaucastel, Châteauneuf-du-Pape 1998</b> (6)				
	<b>Domaine de la Janasse, Châteauneuf-du-Pape, Cuvée Chaupin 1998</b> (6)				
336	30 bottles				per lot £850-1,100 €960-1,200
	<b>Paul Jaboulet Aîné, Hermitage Blanc, Le Chevalier de Stérimberg 1997</b> (12)				
	<b>Paul Jaboulet Aîné, Hermitage, La Chapelle 1998</b> (6)				
	<b>Paul Jaboulet Aîné, Hermitage, La Chapelle 2000</b> (12)				
337	30 bottles				per lot £850-1,000 €960-1,100
	<b>Château Mont Redon, Châteauneuf-du-Pape 2000</b> (12)				
	<b>Clos des Papes, Châteauneuf-du-Pape 2000</b> (12)				
	<b>Clos des Papes, Châteauneuf-du-Pape Blanc 2000</b> (6)				
338	30 bottles				per lot £700-850 €790-950
	Lying in Corsham, Wiltshire (Octavian) <i>Offered in bond, available duty-paid</i>				
	<b>Château de Beaucastel, Châteauneuf-du-Pape 1999</b> <i>Rhône. Perrin</i> <i>In original wooden cases</i>				
•+339	24 bottles				per lot £600-800 €680-900
	<b>Châteauneuf-du-Pape, Perrin, Château de Beaucastel 1999</b> (12)				
	<b>Avril, Clos des Papes 2000</b> (12) <i>In original wooden cases</i>				
•+340	24 bottles				per lot £650-850 €730-950
	<b>Lucien et André Brunel, Châteauneuf-du-Pape Les Cailloux Cuvée Centenaire 2000</b> <i>Rhône</i> <i>In original cartons</i>				
•+341	12 bottles				per lot £800-900 €900-1,000
•+342	12 "				
•+343	12 "				
	<b>Lucien et André Brunel, Châteauneuf-du-Pape Les Cailloux 2000</b> <i>Rhône</i> <i>In original carton</i>				
•+344	24 bottles				per lot £400-600 €450-670
	<b>Paul Avril, Châteauneuf-du-Pape Clos des Papes 2000</b> <i>Rhône</i> <i>In original wooden cases</i>				
•+345	24 bottles				per lot £750-950 €840-1,100
•+346	24 "				
	<b>Joseph Sabon, Châteauneuf-du-Pape Clos du Mont Olivet Cuvée Papet 2000</b> <i>Rhône</i> <i>In original cartons</i>				
•+347	36 bottles				per lot £600-900 €680-1,000
	<b>CHAPOUTIER COTES-DU-ROUSSILLON</b> Lying in Corsham, Wiltshire (Octavian) <i>Offered in bond, available duty-paid</i>				
	<b>M. Chapoutier, Domaine de Bila-Haut 2013</b> <i>Côtes du Roussillon</i> <i>In original cartons</i>				
•+348	60 bottles				per lot £500-600 €560-670
•+349	60 "				
•+350	60 "				
•+351	60 "				
•+352	60 "				
	<b>FINE BAROLO</b> Lying in Corsham, Wiltshire (Octavian) <i>Offered in bond, available duty-paid</i>				
	<b>Paolo Scavino, Barolo Bric del Fiasc 1997</b> <i>Piedmont</i> <i>In original carton</i>				
•+353	12 bottles				per lot £650-750 €730-840
	<b>Poderi Aldo Conterno, Barolo Soprana Bussia 1997</b> <i>Piedmont</i> <i>In original cartons</i>				
•+354	12 bottles				per lot £550-650 €620-730
•+355	12 "				
•+356	12 "				
•+357	12 "				

**PENFOLDS GRANGE**

Lying in Corsham, Wiltshire (Octavian)

**Penfolds Grange 1955**

South Australia

*'Bin 14, bottled 23rd November 1956'. Damaged capsule. Bin-soiled label. Level mid/upper-shoulder*358 1 bottle per lot £1,600-1,800  
€1,800-2,000**Heritage des Comtes de Mareuil, Collection XIX  
Trés Vieille Grande Champagne Cognac 1893***Blue wax capsules over stopper corks. Modern bottling. Neck labels '1893'. Slightly bin-soiled labels. Levels: 3.5cms below base of corks*\*362 2 bottles per lot £1,500-2,000  
€1,700-2,200**FINE MIXED LOTS**

Lying in Corsham, Wiltshire (Octavian)

**Leacock Boal Solera 1851***Imported Rawlings Voigt. Corroded, damaged capsule, signs of seepage. Slightly bin-soiled labels. Level mid-shoulder* (1)**Reichsrat von Buhl,  
Ruppertsberger Linsenbusch Scheurebe  
Beerenauselese 1976***Corroded capsule. Badly bin-soiled, damaged label. Level: 1cm below base of cork* (1)**Friedelsheimer Gerümpel Riesling Beerenauselese  
1976***Corroded capsule. Badly bin-soiled label. Level: 1cm below base of cork* (1)**Sanctus Jacobus, Kanzemer Altenberg Auslese  
1976***Corroded, damaged capsules. Bin-soiled labels. Levels: one 4cms, one 5cms below base of corks* (2)359 5 bottles per lot £400-500  
€450-560

Lying in Corsham, Wiltshire (Octavian)

*Lots 363 and 364 are offered in bond, available duty-paid***Delamain Grande Champagne Cognac 1995***In original cartons*\*363 12 bottles per lot £500-600  
€560-670

\*364 12 ..

Lying in Corsham, Wiltshire (Octavian)

**Castarède Armagnac 1881***In original wooden case. Red wax capsule over fabric strip seal. Modern bottling. Impeccable appearance. 40% A.B.V*365 1 bottle per lot £1,400-1,800  
€1,600-2,000

Lying in Corsham, Wiltshire (Octavian)

**Château Gruaud-Larose 2005** (3)**Château Pape Clément 2005** (1)**Château Cos D'Estournel 2006** (7)**Slightly bin-soiled labels****Castello di Romitorio Brunello di Montalcino****Riserva 2007** (3)**Taittinger Comtes de Champagne 2006** (3)360 17 bottles per lot £700-900  
€790-1,000

Lying in Corsham, Wiltshire (Octavian)

**Château de Lacaze, Bas Armagnac 1983***Bottled by Howell's of Bristol. 46% A.B.V In original six-bottle cartons*\*366 12 bottles per lot £350-450  
€400-500

\*367 12 ..

\*368 12 ..

\*369 12 ..

**FINE COGNAC AND ARMAGNAC**

Lying in Corsham, Wiltshire (Octavian)

**A. de Luze Grande Champagne Cognac 1893***Metal capsule. Dusty bottle. Bin-soiled label. Level 4.5cms below base of cork*\*361 1 bottle per lot £600-800  
€680-900**FINE CHAMPAGNE**

Lying in Corsham, Wiltshire (Octavian)

**Dom Ruinart Brut 1981***Reims  
In original carton*370 6 bottles per lot £500-600  
€560-670**END OF SALE**

Next London wine sale, 8 December 2016

**AUSTRALIA**

**1955**  
Penfolds Grange, 358  
**1970**  
Penfolds Grange, (138)  
California  
**1990**  
Diamond Creek Lake CS, 139  
**1992**  
Araujo Eisele VydCS, 140  
**1994**  
Far Niente, 141

**CHAMPAGNE**

**1952**  
Bollinger Brut, 142  
**1969**  
Louis Roederer Cristal, (143)  
**1971**  
Dom Pérignon Rosé, 144  
**1981**  
Dom Ruinart Brut, 370  
**1982**  
Salon Mesnil, 145  
**1983**  
Salon Mesnil, (146)  
**1990**  
Dom Pérignon Rosé, 147  
**1996**  
Dom Pérignon Rose, 148,149,150  
**2000**  
Dom Pérignon, 151

**CLARET**

**1950**  
Mouton-Rothschild, (164)  
**1955**  
Clos Fourtet, (165)  
**1957**  
Latour, (166)  
**1970**  
Haut-Brion, (172)  
Lafite-Rothschild, 171  
**1971**  
Cos d'Estournel, (167)  
**1972**  
Margaux, 176,177  
**1979**  
Petrus, 168  
**1982**  
Phelan-Segur, (173)  
**1983**  
Lafite-Rothschild, 181  
Lynch-Bages, 178,179  
Margaux, 182,221  
Mouton-Rothschild, 183  
Nenin, 180

**1988**  
Canon, (187)  
Coutet (Saint-Emilion), (282)  
Haut-Brion, 185  
Léoville Barton, 186  
Margaux, 184  
**1989**  
Bahans Haut-Brion, 190  
Bataille, 192  
Gruaud-Larose, 174  
Lafite-Rothschild, 188  
Margaux, 189  
Mouton-Rothschild, 250  
Vieux Chateau Certan, 191  
**1990**  
Cantenac-Brown, 251  
Certan-de-May, 252  
d'Angludet, (194)  
Latour, 193  
Mouton-Rothschild, 223  
Pavillon Rouge du Margaux, 224  
**1993**  
Mouton-Rothschild, (169)  
**1994**  
Forts de Latour, 170  
**1995**  
Belair, (228)  
d'Angludet, (229)  
Ducru-Beaucaillou, 196,225  
Haut-Bailly, (227)  
Latour, 195  
Léoville-Las-Cases, 226  
Pavillon Rouge, 197  
**1996**  
Belgrave, (238)  
Beychevelle, 203  
Cos d'Estournel, (175),202,235  
d'Issan, (206)  
Ducru-Beaucaillou, 201,233  
Forts de Latour, 205  
Grand-Puy-Lacoste, (207)  
Lafite-Rothschild, 198,230  
Latour, 231  
Léoville Barton, 234  
Léoville-Las-Cases, 200  
Lynch-Bages, 204,236  
Margaux, 199,232  
Pavillon Rouge, 237  
**1997**  
Durfort-Vivens, (258)  
Léoville Barton, (255)  
Léoville-Las-Cases, 254, (259)  
Margaux, 253,257  
**1998**  
Ducru-Beaucaillou, 240  
Duhart-Milon, (244)  
Haut-Bailly, (243)  
La Fleur-Petrus, 211  
Lafite-Rothschild, 208  
Latour, 239,260  
Léoville Barton, (212)  
Léoville-Las-Cases, 241  
Palmer, 209,242  
Vieux Chateau Certan, 210

**1999**  
d'Issan, (213)  
Labégorce-Zédé, (222)  
Latour, 261  
Margaux, 256  
Pavillon Rouge, 245  
**2000**  
Alter Ego de Palmer, 248  
Ducru-Beaucaillou, (249)  
Haut-Bages-Liberal, (220)  
Margaux, 246  
Monbousquet, 218  
Palmer, 215,247  
Pavie, 217  
Pavillon Rouge, 216  
Rauzan-Segla, 214  
Vieux Chateau Certan, 219  
**2003**  
Valrose Alienor, 262  
**2004**  
Quinault L'Enclos, (267)  
**2005**  
Grand-Puy-Ducasse, (269)  
Gruaud-Larose, (268),(360)  
**2006**  
Lafite-Rothschild, 270  
Léoville-Las-Cases, 273  
Mouton-Rothschild, 271  
Pichon, Lalande, 272  
Quinault L'Enclos, 274  
**2008**  
Ausone, 276

**ITALY**

**1990**  
Ornellaia, 124,125  
**1995**  
Chianti Classico Casuocia (Ama), 126  
l'Apparita (Ama), 127  
**1997**  
Barbaresco Asili (Giacosa), 129  
Barolo Bric Fiasc (Scavino), 353  
Barolo Bussia Soprana (Conterno), 354  
Barolo Rocche Falletto (Giacosa), 128  
**1998**  
Barbaresco Asili (Giacosa), 131  
Barolo Rocche Falletto (Giacosa), 130  
**1999**  
Barolo Rocche Falletto (Giacosa), 132  
**2000**  
Barolo Falletto Ris (Giacosa), 133  
**2001**  
Barolo Rocche Falletto Ris (Giacosa), 134  
Loire

**MADEIRA**

**1851**  
Leacock Boal Solera, (359)

**OTHER FRENCH**

**2013**  
Bila Haut (Chapoutier), 348

## PORT

### 1960

Warre, 152

### 1963

Warre, 155

### 1970

Warre, 156

### 1977

Fonseca, 158

### 1983

Dow, 153

### 1994

Dow, 154

Taylor, 157

### 1995

Fonseca, 159

### 1997

Graham, (160),162

### 2000

Fonseca, (161),163)

## RED BURGUNDY

### 1969

La Tache (DRC), 84

Richebourg (DRC), 85

### 1979

Grands-Echezeaux (DRC), 292

### 1991

Echezeaux (DRC), 86

### 1993

La Tache (DRC), 87

Richebourg (DRC), 89

### 1996

Bonnes Mares(L Jadot), 297

Clos de la Roche (Jadot), 295

Clos Vougeot (Lamarche), 293,296

Gevrey-Chambertin, Les Cherbaudes (L Boillot), (294)

La Tache (DRC), 90

Nuits-St-Georges, Vaucraines (Chauvet), (298)

### 2011

Chambertin (Jadot), 300

Chapelle-Chambertin (Jadot), 302

Gevrey-Chambertin Clos St-Jacques (Jadot), 304

### 2012

Charmes-Chambertin (Jadot), 306

## RHONE

### 1937

Hermitage La Chapelle (Jaboulet), 117

### 1961

Hermitage La Chapelle (Jaboulet), 119,120,121

### 1978

Hermitage La Chapelle (Jaboulet), 122

### 1990

Hermitage (Chave), 123

### 1995

CNDP Beaucastel, (326)

CNDP, Vieux Telegraphe, (335)

Hermitage La Chapelle (Jaboulet), (334)

### 1996

CNDP Beaucastel Blanc, Roussane VV, (336)

CNDP Blanc Roussane VV Beaucastel, (327)

### 1997

Hermitage (Chave), 328

Hermitage Blanc, Le Chevalier de

Sterimberg (Jaboulet), (337)

Hermitage La Chapelle (Jaboulet), 329

### 1998

Hermitage, La Chapelle, (330)

### 1999

CNDP Beaucastel, 339,(340)

### 2000

CNDP Beaucastel, (331),(332)

CNDP Cailloux (Brunel), 344

CNDP Cailloux Centenaire (Brunel), 341

CNDP Clos des Papes (Avril), 345

CNDP Olivet Papet (Sabon), 347

CNDP, Mont Redon, (333),(338)

## SPAIN

### 1996

Campanario (Abadia Reteurta), 135

El Palomar (Abadia Reteurta), 137

## VINTAGE BRANDY

### 1881

Castarede Aramgnac, 365

### 1893

de Luze, 361

Mareuil TVGCh Cognac, 362

### 1983

de Lacaze, Bas Armagnac, 366

### 1995

Delamain Gr Ch Cognac, 363

White Bordeaux

### 1961

d'Yquem, 277

### 1983

d'Yquem, 281

### 1988

Rieussec, (283)

### 1989

Climens, 284

Coutet, (285)

Rieussec, (286)

### 1997

Guiraud, (287)

Siglas-Rabaud, (291)

### 2006

de Fargues, 288

## WHITE BURGUNDY

Puligny-Montrachet Clavoillon (Leflaive), (316)

### 1995

Montrachet (Colin), 93

### 1996

Chevalier-Montrachet, 299

Meursault Charmes (Girardin), (310)

### 1998

Montrachet (Colin), 94,95

1998/Montrachet (Laguiche Drouhin), 104

### 1999

Meursault Perrieres, (320)

Montrachet (Colin), 96

### 2000

Meursault Genevrieres (Latour), (311)

Meursault Perrieres, (321)

Montrachet (Colin), 97

Montrachet (Leflaive), 105

### 2001

Meursault Perrieres, 322

Montrachet (Colin-Deleger), 116

Montrachet (Colin), 98

### 2002

Meursault Perrieres, (323),(324)

Montrachet (Colin), 99

### 2003

Montrachet (Colin), 100

Montrachet (Leflaive), 106

### 2004

Montrachet (Colin), 101

Montrachet (Leflaive), 107

### 2005

Montrachet (Leflaive), 108

### 2006

Montrachet (Colin), 102

Montrachet (DRC), 91

Montrachet (Leflaive), 109

### 2007

Meursault (Lafon), 312

Montrachet (Colin), 103

Montrachet (DRC), 92

Montrachet (Leflaive), 110

### 2008

Montrachet (Leflaive), 111

### 2009

Montrachet (Leflaive), 112

2009/Montrachet (Laguiche

Drouhin), 313,314

### 2010

Corton-Charlemagne (Faiveley), (315)

Montrachet (Leflaive), 113

### 2011

Bâtard-Montrachet (Jadot), 308

Bienvenues Batard Montrachet(Leflaive), 317

Bourgogne Chardonnay VV (Girardin), 325

Meursault Perrieres (Drouhin), 319

Montrachet (Leflaive), 114

Puligny-Montrachet, 318

### 2012

Montrachet (Leflaive), 115

## WaterAid

Champagne, 59,64,80

Italian Red, 39

Loire White, 25

Port, 1

Red Bordeaux, 6,12

Red Burgundy, 13

Rhone Red, 22

Rioja, 37,38

Spanish Red, 27,29

White Burgundy, 16

# IMPORTANT NOTICES AND EXPLANATION OF CATALOGUING PRACTICE

## IMPORTANT NOTICES

### CHRISTIE'S INTEREST IN PROPERTY CONSIGNED FOR AUCTION

From time to time, Christie's may offer a lot which it owns in whole or in part. Such property is identified in the catalogue with the symbol **A** next to its lot number.

On occasion, Christie's has a direct financial interest in lots consigned for sale, which may include guaranteeing a minimum price or making an advance to the consignor that is secured solely by consigned property. Where Christie's holds such financial interest on its own we identify such lots with the symbol **o** next to the lot number.

Where Christie's has financed all or part of such interest through a third party the lots are identified in the catalogue with the symbol **♦**. When a third party agrees to finance all or part of Christie's interest in a lot, it takes on all or part of the risk of the lot not being sold, and will be remunerated in exchange for accepting this risk based on a fixed fee if the third party is the successful bidder or on the final hammer price in the event that the third party is not the successful bidder. The third party may also bid for the lot. Where it does so, and is the successful bidder, the remuneration may be netted against the final purchase price. If the lot is not sold, the third party may incur a loss. Please see <http://www.christies.com/financial-interest/> for a more detailed explanation of minimum price guarantees and third party financing arrangements.

Where Christie's has an ownership or financial interest in every lot in the catalogue, Christie's will not designate each lot with a symbol, but will state its interest in the front of the catalogue.

ALL DIMENSIONS ARE APPROXIMATE

## CONDITION

Christie's catalogues include references to condition only in descriptions of multiple works (such as prints, books and wine). For all other property, only alterations or replacement components are listed. Please contact the Specialist Department for a condition report on a particular lot. The nature of the lots sold in our auctions is such that they will rarely be in perfect condition, and are likely, due to their nature and age, to show signs of wear and tear, damage, other imperfections, restoration or repair. Any reference to condition in a catalogue entry will not amount to a full description of condition. Condition reports are usually available on request, and will supplement the catalogue description. In describing lots, our staff assess the condition in a manner appropriate to the estimated value of the item and the nature of the auction in which it is included. Any statement as to the physical nature or condition of a lot, in a catalogue, condition report or otherwise, is given honestly and with appropriate care. However, Christie's staff are not professional restorers or trained conservators and accordingly any such statement will not be exhaustive. We therefore recommend that you always view property personally, and, particularly in the case of any items of significant value, that you instruct your own restorer or other professional adviser to report to you in advance of bidding.

### PROPERTY INCORPORATING MATERIALS FROM ENDANGERED AND OTHER PROTECTED SPECIES

Property made of or incorporating (irrespective of percentage) endangered and other protected species of wildlife are marked with the symbol **-** in the catalogue. Such material includes, among other things, ivory, tortoiseshell, crocodile skin, rhinoceros horn, whale bone and certain species of coral, together with Brazilian rosewood. Prospective purchasers are advised that several countries prohibit altogether the importation of property containing such materials, and that other countries require a permit (e.g., a CITES permit) from the relevant regulatory agencies in the countries of exportation as well as importation. Accordingly, clients should familiarise themselves with the relevant customs laws and regulations prior to bidding on any property with wildlife material if they intend to import the property into another country. Please note that it is the client's responsibility to determine and satisfy the requirements of any applicable laws or regulations applying to the export or import of property containing endangered and other protected wildlife material. The inability of a client to export or import property containing endangered and other protected wildlife material is not a basis for cancellation or rescission of the sale. Please note also that lots containing potentially regulated wildlife material are marked as a convenience to our clients, but Christie's does not accept liability for errors or for failing to mark lots containing protected or regulated species.

### RECENT CHANGES TO IMPORTS OF ELEPHANT IVORY AND OTHER WILDLIFE MATERIAL INTO THE USA

The USA has recently changed its policy on the import of property made of or containing elephant ivory. Only Asian Elephant ivory may be imported into the USA, and imports must be accompanied by DNA analysis and confirmation the object is more than 100 years old. We have not obtained a DNA analysis on any lot prior to sale and cannot indicate whether the elephant ivory in a particular lot is African or Asian elephant. Buyers purchase these lots at their own risk and will be responsible for the costs of obtaining any DNA analysis or other report required in connection with their proposed import of such property into the USA.

The USA is also currently requiring all imports of property made of or containing wildlife material to be accompanied by a scientific confirmation of species and in some cases an additional confirmation of age. We have not obtained such confirmations prior to sale (unless specifically indicated) and buyers will be responsible for the costs of any such additional confirmations or opinions required for their proposed import into the USA.

A buyer's inability to export or import any lot containing elephant ivory or other wildlife material is not a basis for cancelling the purchase.

## BIDDING

Bidding will be at duty-paid prices at per lot, unless a property is identified in the catalogue with the symbol **‡** next to the lot number.

### OPTIONS TO BUY PARCELS

A parcel consists of several lots of the same wine of identical lot size, bottle size and description.

Bidding will start on the first lot of the parcel and the successful buyer of that lot is entitled to take some or all of the remaining lots in the parcel at the same hammer price.

If the buyer of the first lot does not take further lots, the remaining lots of the parcel will be offered in a similar fashion.

We recommend that a bid on a parcel lot be placed on the first lot of the parcel. If the bid is superseded, Christie's will automatically move your bid to the next identical lot and so on.

In all instances, such bids will be handled at the auctioneer's discretion.

### WINES SOLD IN BOND ONLY

Bonded transfer certificates will be issued upon payment. United Kingdom purchasers will be responsible for duty, clearance, delivery and any other charges applicable from the date of sale.

### WINES OFFERED DUTY PAID

Unless otherwise stated wines are offered duty paid and no excise duty or clearance VAT will be charged.

### WINES OFFERED IN BOND

Wines marked with a **‡** symbol are in bond. You can choose to take these lots in bond or duty paid. Please note that if you choose to take these lots in bond the hammer price will be payable in full. We will not deduct excise duty from the hammer price. If you choose to take these lots duty paid excise duty at current rates and clearance VAT on the hammer price and duty will be added to your invoice. These charges cannot be cancelled or refunded by Christie's. Please see the additional conditions of sale for wine for further details.

### DELIVERIES (DUTY-PAID ONLY, U.K. MAINLAND)

The carriage charge for all deliveries lying in cellars within the U.K. mainland is £15 per case or part case plus V.A.T. Wines lying at Christie's are available for collection after payment, providing that 24 hours' notice is given. Not less than an entire lot can be collected or delivered to one address.

### DELIVERIES FOR OVERSEAS BUYERS

Christie's will arrange delivery to buyers' agents within the U.K. mainland. We work closely with all the major shipping companies and will be happy to advise clients upon the most appropriate shipper if required.

### CLASSIFICATIONS

Bordeaux Classifications in the text are for identification purposes only and are based on the official 1855 classification of the Médoc and other standard sources. All wines are Château-bottled unless stated otherwise.

### RELEASE OF LOTS

The issue of Christie's official Delivery Order will constitute delivery.

### ULLAGES AND CORKS OF OLD WINES

Wines are described in this catalogue as correctly as can be ascertained at time of going to press, but buyers of old wines must make appropriate allowances for natural variations of ullages, conditions of cases, labels, corks and wine. No returns will be accepted.

### ULLAGE

The amount by which level of wine is short of being full: these levels may vary according to age of the wines and, as far as can be ascertained by inspection prior to the sale, are described in the catalogue.

# BUYING AT CHRISTIE'S

## CONDITIONS OF SALE

Christie's Conditions of Sale and Limited Warranty are set out later in this catalogue. Bidders are strongly encouraged to read these as they set out the terms on which property is bought at auction.

## ESTIMATES

Estimates are based upon prices recently paid at auction for comparable property, condition, rarity, quality and provenance. Estimates are subject to revision. Buyers should not rely upon estimates as a representation or prediction of actual selling prices. Estimates do not include the buyer's premium or VAT. Where "Estimate on Request" appears, please contact the Specialist Department for further information.

## RESERVE

The reserve is the confidential minimum price the consignors will accept and will not exceed the low pre-sale estimate. Lots that are not subject to a reserve are identified by the symbol  $\lambda$  next to the lot number.

## BUYER'S PREMIUM

Christie's charges a premium to the buyer on the final bid price of each lot sold at the following rates: 25% of the final bid price of each lot up to and including £50,000, 20% of the excess of the hammer price above £50,000 and up to and including £1,000,000 and 12% of the excess of the hammer price above £1,000,000. Exceptions: Wine and Cigars: 17.5% of the final bid price of each lot. VAT is payable on the premium at the applicable rate.

## PRE-AUCTION VIEWING

Pre-auction viewings are open to the public free of charge. Christie's specialists are available to give advice and condition reports at viewings or by appointment.

## BIDDER REGISTRATION

Prospective buyers who have not previously bid or consigned with Christie's should bring:

- Individuals: government-issued photo identification (such as a photo driving licence, national identity card, or passport) and, if not shown on the ID document, proof of current address, for example a utility bill or bank statement.
- Corporate clients: a certificate of incorporation.
- For other business structures such as trusts, offshore companies or partnerships, please contact Christie's Credit Department at +44 (0)20 7389 2825 for advice on the information you should supply.
- A financial reference in the form of a recent bank statement or a reference from your bank in line with our expected purchase level. Christie's can supply a form of wording for the bank reference if necessary.
- Persons registering to bid on behalf of someone who has not previously bid or consigned with Christie's should bring identification documents not only for themselves but also for the party on whose behalf they are bidding, together with a signed letter of authorisation from that party.

To allow sufficient time to process the information, new clients are encouraged to register at least 48 hours in advance of a sale. Prospective buyers should register for a numbered bidding paddle at least 30 minutes before the auction. Clients who have not made a purchase from any Christie's office within the last one year, and those wishing to spend more than on previous occasions, will be asked to supply a new bank reference. For assistance with references, please contact Christie's Credit Department at +44 (0)20 7389 2862 (London, King Street) or at +44 (0)20 7752 3137 (London, South Kensington).

**We may at our option ask you for a financial reference or a deposit as a condition of allowing you to bid.**

**REGISTERING TO BID ON SOMEONE ELSE'S BEHALF**

Persons bidding on behalf of an existing client should bring a signed letter from the client authorising the bidder to act on the client's behalf. Please note that Christie's does not accept payments from third parties. Christie's can only accept payment from the client, and not from the person bidding on their behalf.

## BIDDING

The auctioneer accepts bids from those present in the sale-room, from telephone bidders, or by absentee written bids left with Christie's in advance of the auction. The auctioneer may also execute bids on behalf of the seller up to the amount of the reserve. The auctioneer will not specifically identify bids placed on behalf of the seller. Under no circumstances will the auctioneer place an bid on behalf of the seller at or above the reserve. Bid steps are shown on the Absentee Bid Form at the back of this catalogue.

## ABSENTEE BIDS

Absentee bids are written instructions from prospective buyers directing Christie's to bid on their behalf up to a maximum amount specified for each lot. Christie's staff will attempt to execute an absentee bid at the lowest possible price taking into account the reserve price. Absentee bids submitted on "no reserve" lots will, in the absence of a higher bid, be executed at approximately 50% of the low pre-sale estimate or at the amount of the bid if it is less than 50% of the low pre-sale estimate. The auctioneer may execute absentee bids directly from the rostrum, clearly identifying these as "absentee bids", "book bids", "order bids" or "commission bids". Absentee Bids Forms are available in this catalogue, at any Christie's location, or online at christies.com.

## TELEPHONE BIDS

Telephone bids cannot be accepted for lots estimated below £2,000. Arrangements must be confirmed with the Bid Department at least 24 hours prior to the auction at +44 (0)20 7389 2658 (London, King Street) or +44 (0)20 7752 3111 (London, South Kensington). Arrangements to bid in languages other than English must be made well in advance of the sale date. Telephone bids may be recorded. By bidding on the telephone, prospective purchasers consent to the recording of their conversation.

## SUCCESSFUL BIDS

While invoices are sent out by mail after the auction we do not accept responsibility for notifying you of the result of your bid. Buyers are requested to contact us by telephone or in person as soon as possible after the sale to obtain details of the outcome of their bids to avoid incurring unnecessary storage charges. Successful bidders will pay the price of the final bid plus premium plus any applicable VAT.

## PAYMENT

Buyers are expected to make payment for purchases immediately after the auction. To avoid delivery delays, prospective buyers are encouraged to supply bank or other suitable references before the auction. Please note that Christie's will not accept payments for purchased Lots from any party other than the registered buyer. Lots purchased in London may be paid for in the following ways: wire transfer, credit card: Visa and MasterCard & American Express only (up to £25,000), and cash (up to £5,000 (subject to conditions)), bankers draft (subject to conditions) or cheque (must be drawn in GBP on a UK bank; clearance will take 5 to 10 business days). Wire Transfers: Lloyds TSB Bank Plc City Office PO Box 217 2 Lombard Street, London EC3P 3BT / A/C: 00172710 Sort Code: 3000-00-02 for international transfers, SWIFT LOYDGBL2CLTY. For banks asking for an IBAN: GB81 LOYD 3000 0200 1272 10. Credit Card: Visa and MasterCard & American Express only A limit of £25,000 for credit card payments will apply. This limit is inclusive of the buyer's premium and any applicable taxes. Credit card payments at London sale sites will only be accepted for London sales. Christie's will not accept credit card payments for purchases made in any other sale site. The fax number to send completed CNP (Card Member not Present) authorisation forms to is +44 (0) 20 7389 2821. The number to call to make a CNP payment over the phone is +44 (0) 20 7752 3388. Alternatively, clients can mail the authorisation form to the address below. Cash is limited to £5,000 (subject to conditions). Bankers Draft should be made payable to Christie's (subject to conditions).

Cheques should be made payable to Christie's (must be drawn in GBP on a UK bank, clearance will take 5 to 10 business days). In order to process your payment efficiently, please quote sale number, invoice number and client number with all transactions. All mailed payments should be sent to: Christie's, Cashiers' Department, 8 King Street, St James's, London, SW1Y 6QT. Please direct all inquiries to King Street. Tel: +44 (0) 20 7389 2996 Fax: +44 (0) 20 7389 2863 or South Kensington. Tel: +44 (0) 20 7752 3138 Fax: +44 (0) 20 7752 3143

## VAT

† VAT payable at 20% on hammer price and buyer's premium \*

These lots have been imported from outside the EU for sale using a Temporary Import regime. Import VAT is payable (at 5%) on the Hammer price. VAT is also payable (at 20%) on the buyer's Premium on a VAT inclusive basis. This VAT is not shown separately on the invoice. When a buyer of such a lot has registered an EU address but wishes to export the lot or complete the import into another EU country, he must advise Christie's immediately after the auction.

‡ These lots have been imported from outside the EU for sale using a Temporary Import regime. Import VAT is payable (at 20%) on the Hammer price. VAT is also payable (at 20%) on the buyer's Premium on a VAT inclusive basis. This VAT is not shown separately on the invoice. Where applicable Customs duty will be charged (per rate specified by HMRC guidance) on the Hammer price and VAT will be payable at 20% on duty. When a buyer of such a lot has registered an EU address but wishes to export the lot or complete the import into another EU country, he must advise Christie's immediately after the auction.

§ These lots have been imported from outside the EU for sale using a Temporary Import regime. Import VAT is payable (at 20%) on the Hammer price. VAT is also payable (at 20%) on the buyer's Premium on a VAT inclusive basis. This VAT is not shown separately on the invoice. Where applicable Customs duty will be charged (per rate specified by HMRC guidance) on the Hammer price and VAT will be payable at 20% on duty. When a buyer of such a lot has registered an EU address but wishes to export the lot or complete the import into another EU country, he must advise Christie's immediately after the auction.

- **Buyers from within the EU:**  
VAT payable at 20% on just the buyer's premium (NOT the hammer price)
- **Buyers from outside the EU:**  
VAT payable at 20% on hammer price and buyer's premium. If a buyer, having registered under a non-EU address, decides that the item is not to be exported from the EU, then he should advise Christie's to this effect immediately
- **Zero rated**  
No VAT charged.

## (No symbol) Auctioneer's Margin Scheme

If in other circumstances no VAT will be charged on the hammer price, but VAT payable at 20% will be added to the buyer's premium which is invoiced on a VAT inclusive basis.

## Wine Auctions

† This wine is in bond. You can choose to take the wine in bond or duty paid. See the additional conditions of sale relating to wine for further details.

## VAT Refunds

Refunds cannot be made where lots have been purchased with an inside EU address. Christie's can only refund Import VAT. Lots with \* or † symbol if lots are exported within 30 days of collection. Valid export documents must be returned within the stipulated time frame. No refund will be paid out where the total amount is less than £100. UK & EU private buyers cannot reclaim VAT. Christie's will charge £35 for each refund processed. For detailed information please see the leaflets available, or email info@christies.com. Where non-EU buyers have failed to export their lots outside of the EU within the required time, HM Revenue & Customs will not allow a VAT refund to be made. This is a requirement of UK legislation and Christie's do not have discretion to make exceptions to the rule. UK and EU private buyers cannot reclaim any VAT charged.

## ARTIST'S RESALE RIGHT ("DROIT DE SUITE")

If a lot is affected by this right it will be identified with the symbol  $\lambda$  next to the lot number. The buyer agrees to pay to Christie's an amount equal to the resale royalty. Resale royalty applies where the Hammer Price is 1,000 Euro or more and the amount cannot be more than 12,500 Euro per lot. The amount is calculated as follows:

Royalty	For the portion of the Hammer Price (in Euro)
4.00%	to 50,000.01
3.00%	between 50,000.01 and 200,000
1.00%	between 200,000.01 and 350,000
0.50%	between 350,000.01 and 500,000
0.25%	in excess of 500,000

Invoices will, as usual, be issued in Pounds Sterling. For the purposes of calculating the resale royalty the Pounds Sterling/Euro rate of exchange will be the European Central Bank reference rate on the day of the sale.

## SHIPPING

It is the buyer's responsibility to pick up purchases or make all shipping arrangements. After payment has been made in full, Christie's can arrange property packing and shipping at the buyer's request and expense. Buyers should request an estimate for any large items or property of high value that require professional packing. A shipping form is enclosed with each invoice, alternatively buyers can visit [www.christies.com/shipping](http://www.christies.com/shipping) to request a shipping estimate. For more information please contact the Shipping Department at +44 (0)20 7389 2712 or via [ArtTransport\\_London@christies.com](mailto:ArtTransport_London@christies.com) for both London, King Street and London, South Kensington sales.

**EXPORT OF GOODS FROM THE EU**

If you are proposing to take purchased items outside the EU the following applies:

**Christie's Art Transport:**  
If you use Christie's Art Transport you will not be required to pay the VAT at the time of settlement.

**Christie's VAT Authorised Shipper:**  
If you use a Christie's VAT authorised shipper you will not be required to pay the VAT at the time of settlement.

## Own Shipper:

VAT will be charged on the invoice, refundable by the VAT Department upon receipt of the appropriate official documents sent to us by your shipper.

## Hand-Carried:

VAT will be charged on the invoice. This will be refunded by the VAT Department upon receipt of the appropriate official document.

## \* $\Omega$ or †

Starred, Omega or Daggered lots - A C88 can be obtained from Christie's Shipping Department. This document must be stamped by UK Customs on leaving the UK.

## (No symbol)

Margin Scheme Lots - Please obtain GB Tax Free form from the Cashiers. This document must be stamped by UK Customs on leaving the UK.

Starred or Omega lots must be exported within 30 days of the date of collection. All other lots not subject to import VAT must be exported within three months of collection, and proof of export provided in the appropriate form

## EXPORT/IMPORT PERMITS

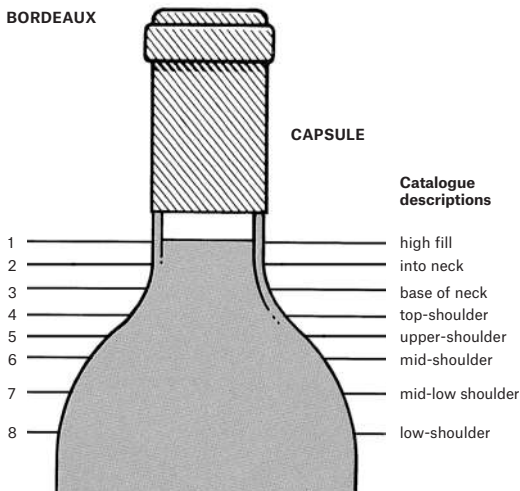
Buyers should always check whether an export licence is required before exporting. It is the buyer's sole responsibility to obtain any relevant export or import licence. The denial of any licence or any delay in obtaining licences shall neither justify the rescission of any sale nor any delay in making full payment for the lot.

Christie's can advise buyers on the detailed provisions of the export licensing regulations and will submit any necessary export licence applications on request. However, Christie's cannot ensure that a licence will be obtained. Local laws may prohibit the import of some property and/or may prohibit the resale of some property in the country of importation. For more information, please contact Christie's Shipping Department at +44 (0)20 7389 2828 or the Museums, Libraries and Archives Council: Acquisitions, Export and Loans Unit at +44 (0)20 7273 8269/8267.

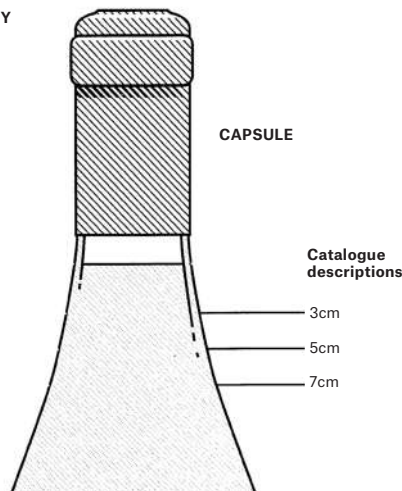
# LEVEL/ULLAGE DESCRIPTIONS AND INTERPRETATIONS

(see notes below)

## BORDEAUX



## BURGUNDY



- 1 into neck: Level of young wines. Exceptionally good in wines over 10 years old.
- 2 bottom neck: Perfectly good for any age of wine. Outstandingly good for a wine of 20 years in bottle, or longer.
- 3 very top-shoulder
- 4 top-shoulder: Normal for any claret 15 years old or older.
- 5 upper-shoulder: Slight natural reduction through the easing of the cork and evaporation through cork and capsule. Usually no problem. Acceptable for any wine over 20 years old. Exceptional for pre-1950 wines.

- 6 mid-shoulder: Probably some weakening of the cork and some risk. Not abnormal for wines 30/40 years of age. Estimates usually take this into account.
- 7 mid-low-shoulder: Some risk. Low estimates.
- 8 low-shoulder: Risky and usually only accepted for sale if wine or label exceptionally rare or interesting. Always offered with low estimate.

Because of the slope of shoulder it is impractical to describe levels as mid-shoulder, etc. Wherever appropriate the level between cork and wine will be measured and catalogued in centimetres.

The condition and drinkability of burgundy is less affected by ullage than its equivalent from Bordeaux. For example, a 5 to 7 cm. ullage in a 30-year-old burgundy can be considered normal, indeed good for age, 3.5 to 4 cm. excellent for age, even 7cm. rarely a risk.

## BOTTLE SIZES

- magnum = two regular bottles
- marie-jeanne = three regular bottles
- double-magnum = four regular bottles
- jeroboam = four regular bottles (Burgundy, Champagne)
- jeroboam = six regular bottles (or 5 litres) (Bordeaux)
- impériale = eight regular bottles (Bordeaux)
- methusalem = eight regular bottles (Burgundy)

## SPECIAL NOTICE

Though every effort is made to describe or measure the levels of older vintages, corks over 20 years old begin to lose their elasticity and levels can change between cataloguing and sale. Old corks have also been known to fail during or after shipment.

We therefore repeat that there is always a risk of cork failure with old wines and due allowance must be made for this.

Under no circumstances can an adjustment of price or credit be made after delivery except under the terms stated in Paragraph 5 of the Conditions of Sale.

Unless otherwise stated, Bordeaux are château bottled and all wines are bottled in the country of production.

Important note regarding opening of cases and listing of levels: Christie's and NYWines general policy is to open all wood cases and to describe levels. Bidders must make allowances for reasonable variations in ullage which may be encountered in cases from the 1984 vintage and older. Additionally, all wine from vintages 1985 and younger have levels bottom neck or better unless otherwise noted.



## CONDITIONS OF SALE

These Conditions of Sale and the Important Notices and Explanation of Cataloguing Practice set out the terms governing the legal relationship of Christie's and the seller with the buyer. You should read them carefully before bidding.

### 1. CHRISTIE'S AS AGENT

Except as otherwise stated Christie's acts as agent for the seller. The contract for the sale of the property is therefore made between the seller and the buyer.

### 2. CATALOGUE DESCRIPTIONS AND CONDITION

Lots are sold as described and otherwise in the condition they are in at the time of the sale, on the following basis.

#### (a) Condition

The nature of the lots sold in our auctions is such that they will rarely be in perfect condition, and are likely, due to their nature and age, to show signs of wear and tear, damage, other imperfections, restoration or repair. Any reference to condition in a catalogue entry will not amount to a full description of condition. Condition reports are usually available on request, and will supplement the catalogue description. In describing lots, our staff assess the condition in a manner appropriate to the estimated value of the item and the nature of the auction in which it is included. Any statement as to the physical nature or condition of a lot, in a catalogue, condition report or otherwise, is given honestly and with appropriate care. However, Christie's staff are not professional restorers or trained conservators and accordingly any such statement will not be exhaustive. We therefore recommend that you always view property personally, and, particularly in the case of any items of significant value, that you instruct your own restorer or other professional adviser to report to you in advance of bidding.

#### (b) Cataloguing Practice

Our cataloguing practice is explained in the Important Notices and Explanation of Cataloguing Practice, which appear after the catalogue entries.

#### (c) Attribution etc

Any statements made by Christie's about any lot, whether orally or in writing, concerning attribution to, for example, an artist, school, or country of origin, or history or provenance, or any date or period, are expressions of our opinion or belief. Our opinions and beliefs have been formed honestly and in accordance with the standard of care reasonably to be expected of an auction house of Christie's standing, due regard having been had to the estimated value of the item and the nature of the auction in which it is included. It must be clearly understood, however, that, due to the nature of the auction process, we are unable to carry out exhaustive research of the kind undertaken by professional historians and scholars, and also that, as research develops and scholarship and expertise evolve, opinions on these matters may change. We therefore recommend that, particularly in the case of any item of significant value, you seek advice on such matters from your own professional advisers.

#### (d) Estimates

Estimates of the selling price should not be relied on as a statement that this is the price at which the item will sell or its value for any other purpose.

#### (e) Fitness for Purpose

Lots sold are enormously varied in terms of age, category and condition, and may be purchased for a variety of purposes. Unless otherwise specifically agreed, no promise is made that a lot is fit for any particular purpose.

### 3. AT THE SALE

#### (a) Refusal of admission

Christie's has the right, at our complete discretion, to refuse admission to the premises or participation in any auction and to reject any bid.

#### (b) Registration before bidding

Prospective buyers who wish to bid in the saleroom can register online in advance of the sale, or can come to the saleroom on the day of the sale approximately 30 minutes before the start of the sale to register in person. Prospective buyers must complete and sign a registration form with his or her name and permanent address, and provide identification before bidding. We may require the production of bank details from which payment will be made or other financial references.

#### (c) Bidding as principal

When making a bid, a bidder is accepting personal liability to pay the purchase price, including the buyer's premium and all applicable taxes, plus all other applicable charges, unless it has been explicitly agreed in writing with Christie's before the commencement of the sale that the bidder is acting as agent on behalf of an identified third party acceptable to Christie's, and that Christie's will only look to the principal for payment.

#### (d) Absentee bids

We will use reasonable efforts to carry out written bids delivered to us prior to the sale for the convenience of clients who are not present at the auction in person, by an agent or by telephone. Bids must be placed in the currency of the place of the sale. Please refer to the catalogue for the Absentee Bids Form. If we receive written bids on a particular lot for identical amounts, and at the auction these are the highest bids on the lot, it will be sold to the person whose written bid was received and accepted first. Execution of written bids is a free service undertaken subject to other commitments at the time of the sale and provided that we have exercised reasonable care in the handling of written bids, the volume of goods is such that we cannot accept liability in any individual instance for failing to execute a written bid or for errors and omissions in connection with it arising from circumstances beyond our reasonable control.

#### (e) Telephone bids

If a prospective buyer makes arrangements with us prior to the commencement of the sale we will use reasonable efforts to contact them to enable them to participate in the bidding by telephone but we do not accept liability for failure to do so or for errors and omissions in connection with telephone bidding arising from circumstances beyond our reasonable control.

#### (f) Currency converter

At some auctions a currency converter may be operated. Errors may occur in the operation of the currency converter. Where these arise from circumstances beyond our reasonable control we do not accept liability to bidders who follow the currency converter rather than the actual bidding in the saleroom.

#### (g) Video or digital images

At some auctions there may be a video or digital screen. Errors may occur in its operation and in the quality of the image. We do not accept liability for such errors where they arise for reasons beyond our reasonable control.

#### (h) Reserves

Unless otherwise indicated, all lots are offered subject to a reserve, which is the confidential minimum price below which the lot will not be sold. The reserve will not exceed the low estimate printed in the catalogue. If any lots are not subject to a reserve, they will be identified with the symbol • next to the lot number. The auctioneer may open the bidding on any lot below the reserve by placing a bid on behalf of the seller. The auctioneer may continue to bid on behalf of the seller up to the amount of the reserve, either by placing consecutive bids or by placing bids in response to other bidders.

#### (i) Auctioneer's discretion

The auctioneer has the right to exercise reasonable discretion in refusing any bid, advancing the bidding in such a manner as he may decide, withdrawing or dividing any lot, combining any two or more lots and, in the case of error or dispute, and whether during or after the sale, determining the successful bidder, continuing the bidding, cancelling the sale or reoffering and reselling the item in dispute. If any dispute arises after the sale, then, in the absence of any evidence to the contrary the sale record maintained by the auctioneer will be conclusive.

#### (j) Successful bid and passing of risk

Subject to the auctioneer's reasonable discretion, the highest bidder accepted by the auctioneer will be the buyer and the striking of his hammer marks the acceptance of the highest bid and the conclusion of a contract for sale between the seller and the buyer. Risk and responsibility for the lot (including frames or glass where relevant) passes to the buyer at the expiration of seven calendar days from the date of the sale or on collection by the buyer if earlier.

### 4. AFTER THE SALE

#### (a) Buyer's premium

In addition to the hammer price, the buyer agrees to pay to us the buyer's premium together with any applicable value added tax. The buyer's premium is 25% of the final bid price of each lot up to and including £50,000, 20% of the excess of the hammer price above £50,000 and up to and including £1,000,000 and 12% of the excess of the hammer price above £1,000,000. Exceptions: Wine and Cigars: 17.5% of the final bid price of each lot, VAT is payable at the applicable rate.

#### (b) Artist's Resale Right ("Droit de Suite")

If the Artist's Resale Right Regulations 2006 apply to the lot the buyer also agrees to pay to us an amount equal to the resale royalty provided for in those Regulations. Lots affected are identified with the symbol  $\lambda$  next to the lot number.

#### (c) Payment and ownership

The buyer must pay the full amount due (comprising the hammer price, buyer's premium and any applicable taxes or resale royalty) immediately after the sale. This applies even if the buyer wishes to export the lot and an export licence is, or may be, required. The buyer will not acquire title to the lot until all amounts due to us from the buyer have been received by us in good cleared funds even in circumstances where we have released the lot to the buyer.

#### (d) Collection of purchases

We shall be entitled to retain items sold until all amounts due to us, or to Christie's International plc, or to any of its affiliates, subsidiaries or parent companies worldwide, have been received in full in good cleared funds or until the buyer has performed any other outstanding obligations as we, in our sole discretion, shall require, including, for the avoidance of doubt, completing any anti-money laundering or anti-terrorism financing checks we may require to our satisfaction. In the event a buyer fails to complete any anti-money laundering or anti-terrorism financing checks to our satisfaction, Christie's shall be entitled to cancel the sale and to take any other actions that are required or permitted under applicable law. Subject to this, the buyer shall collect purchased lots within two calendar days from the date of the sale unless otherwise agreed between us and the buyer.

#### (e) Packing, handling and shipping

Although we shall use reasonable efforts to take care when handling, packing and shipping a purchased lot and in selecting third parties for these purposes, we are not responsible for the acts or omissions of any such third parties. Similarly, where we suggest other handlers, packers or carriers if so requested, our suggestions are made on the basis of our general experience of such parties in the past and we are not responsible to any person to whom we have made a recommendation for the acts or omissions of the third party concerned.

#### (f) Export licence

Unless otherwise agreed by us in writing, the fact that the buyer wishes to apply for an export licence does not affect his or her obligation to make payment immediately after the sale nor our right to charge interest or storage charges on late payment. If the buyer requests us to apply for an export licence on his or her behalf, we shall be entitled to make a charge for this service. We shall not be obliged to rescind a sale nor to refund any interest or other expenses incurred by the buyer where payment is made by the buyer in circumstances where an export licence is required.

#### (g) Remedies for non payment

If the buyer fails to make payment in full in good cleared funds within 7 days after the sale, we shall have the right to exercise a number of legal rights and remedies. These include, but are not limited to, the following:

- (i) to charge interest at an annual rate equal to 5% above the base rate of Lloyds TSB Bank Plc;
- (ii) to hold the defaulting buyer liable for the total amount due and to commence legal proceedings for its recovery together with interest, legal fees and costs to the fullest extent permitted under applicable law;
- (iii) to cancel the sale;
- (iv) to resell the property publicly or privately on such terms as we shall think fit;
- (v) to pay the seller an amount up to the net proceeds payable in respect of the amount bid by the defaulting buyer;
- (vi) to set off against any amounts which we, or Christie's International plc, or any of its affiliates, subsidiaries or parent companies worldwide, may owe the buyer in any other transactions, the outstanding amount remaining unpaid by the buyer;
- (vii) where several amounts are owed by the buyer to us, or to Christie's International plc, or to any of its affiliates, subsidiaries or parent companies worldwide, in respect of different

transactions, to apply any amount paid to discharge any amount owed in respect of any particular transaction, whether or not the buyer so directs;

- (viii) to reject at any future auction any bids made by or on behalf of the buyer or to obtain a deposit from the buyer before accepting any bids;
- (ix) to exercise all the rights and remedies of a person holding security over any property in our possession owned by the buyer, whether by way of pledge, security interest or in any other way, to the fullest extent permitted by the law of the place where such property is located. The buyer will be deemed to have granted such security to us and we may retain such property as collateral security for such buyer's obligations to us;
- (x) to take such other action as we deem necessary or appropriate.

If we resell the property under paragraph (iv) above, the defaulting buyer shall be liable for payment of any deficiency between the total amount originally due to us and the price obtained upon resale as well as for all reasonable costs, expenses, damages, legal fees and commissions and premiums of whatever kind associated with both sales or otherwise arising from the default. If we pay any amount to the seller under paragraph (v) above, the buyer acknowledges that Christie's shall have all of the rights of the seller, however arising, to pursue the buyer for such amount.

#### (h) Failure to collect purchases

Where purchases are not collected within two calendar days from the date of the sale, whether or not payment has been made, we shall be permitted to remove the property to a third party warehouse at the buyer's expense, and only release the items after payment in full has been made of removal, storage, handling, and any other costs reasonably incurred, together with payment of all other amounts due to us.

#### (i) Selling Property at Christie's

In addition to expenses such as transport, all consignors pay a commission according to a fixed scale of charges based upon the value of the property sold by the consignor at Christie's in a calendar year. Commissions are charged on a sale by sale basis.

### 5. LIMITED WARRANTY

In addition to Christie's liability to buyers set out in clause 2 of these Conditions, but subject to the terms and conditions of this paragraph, Christie's warrants for a period of five years from the date of the sale that any property described in headings printed in UPPER CASE TYPE (i.e. headings having all capital-letter type) in this catalogue (as such description may be amended by any saleroom notice or announcement) which is stated without qualification to be the work of a named author or authorship, is authentic and not a forgery. The term "author" or "authorship" refers to the creator of the property or to the period, culture, source or origin, as the case may be, with which the creation of such property is identified in the UPPER CASE description of the property in this catalogue. Only UPPER CASE TYPE headings of lots in this catalogue indicate what is being warranted by Christie's. Christie's warranty does not apply to supplemental material which appears below the UPPER CASE TYPE headings of each lot and Christie's is not responsible for any errors or omissions in such material. The terms used in the headings are further explained in Important Notices and Explanation of Cataloguing Practice.

The warranty does not apply to any heading which is stated to represent a qualified opinion. The warranty is subject to the following:

- (i) It does not apply where (a) the catalogue description or saleroom notice corresponded to the generally accepted opinion of scholars or experts at the date of the sale or fairly indicated that there was a conflict of opinions; or (b) correct identification of a lot can be demonstrated only by means of either a scientific process not generally accepted for use until after publication of the catalogue or a process which at the date of publication of the catalogue was unreasonably expensive or impractical or likely to have caused damage to the property.
- (ii) The benefits of the warranty are not assignable and shall apply only to the original buyer of the lot as shown on the invoice originally issued by Christie's when the lot was sold at auction.
- (iii) The original buyer must have remained the owner of the lot without disposing of any interest in it to any third party.
- (iv) The buyer's sole and exclusive remedy against Christie's and the seller, in place of any other remedy which might be available, is the cancellation of the sale and the refund of the original purchase price paid for the lot. Neither Christie's nor the seller will be liable for any special, incidental or consequential damages including, without limitation, loss of profits nor for interest.
- (v) The buyer must give written notice of claim to us within five years from the date of the auction. It is Christie's general policy, and Christie's shall have the right, to require the buyer to obtain the written opinions of two recognised experts in the field, mutually acceptable to Christie's and the buyer, before Christie's decides whether or not to cancel the sale under the warranty.
- (vi) The buyer must return the lot to the Christie's saleroom at which it was purchased in the same condition as at the time of the sale.

### 6. COPYRIGHT

The copyright in all images, illustrations and written material produced by or for Christie's relating to a lot including the contents of this catalogue, is and shall remain at all times the property of Christie's and shall not be used by the buyer, nor by anyone else, without our prior written consent. Christie's and the seller make no representation or warranty that the buyer of a property will acquire any copyright or other reproduction rights in it.

### 7. SEVERABILITY

If any part of these Conditions of Sale is found by any court to be invalid, illegal or unenforceable, that part shall be discounted and the rest of the conditions shall continue to be valid to the fullest extent permitted by law.

### 8. LAW AND JURISDICTION

The rights and obligations of the parties with respect to these Conditions of Sale, the conduct of the auction and any matters connected with any of the foregoing shall be governed and interpreted by the laws of England. By bidding at auction, whether present in person or by agent, by written bid, telephone or other means, the buyer shall be deemed to have submitted, for the benefit of Christie's, to the exclusive jurisdiction of the courts of the United Kingdom.

## **ADDITIONAL CONDITIONS OF SALE RELATING TO WINE**

### **1. BUYER'S PREMIUM**

Further to Condition 4 (a)

The buyer's premium for Wine is 17.5% of the final bid price. For all lots VAT is payable on the premium at the applicable rate.

### **2. WINES OFFERED DUTY PAID**

Unless otherwise stated wines are offered duty paid and no excise duty or clearance VAT will be charged.

VAT will be added to the buyer's premium but will not be shown separately on our invoice.

### **3. WINES OFFERED IN BOND (\* SYMBOL)**

These lots are in bond. You can choose to take these lots in bond or duty paid.

If you choose to buy the lots in bond no excise duty or clearance VAT will be charged. You will be responsible for arranging collection by a shipper with a bond movement guarantee or by a warehouse with a customs bond/ suspense regime and for any fees charged by the shipper or warehouse. Please note that if you take your purchases out of bond at a future date excise duty and clearance charges will become payable. To buy the lots in bond, please contact us in writing prior to the sale. Buyers who do not do so will be invoiced duty paid.

If you choose to buy the wine duty paid excise duty at current rates and clearance VAT on the hammer price and duty will be added to your invoice. These charges cannot be cancelled or refunded by Christie's.

If you intend to export out of the EU you may do so by purchasing the wines under bond. Whether you choose to buy the lot in bond or duty paid, VAT will be added to the buyer's premium but will not be shown separately on our invoice.

Please note VAT on the premium may be reclaimed by UK VAT registered clients via their own VAT return subject to the normal rules. Outside EU Trade buyers may reclaim the premium VAT providing all refund conditions are met. For EU VAT registered clients no VAT will be charged on the premium. Clearance VAT is NOT recoverable. For further details about VAT refunds please contact the UK VAT team VAT\_london@christies.com.

### **4. PAYMENT**

Further to Condition 4:

the purchase price is exclusive of, and the buyer shall be responsible for;

- (i) any charge for storage from the date of the auction;
- (ii) any charge for subsequent packing or carriage; and
- (iii) if you choose to take wines offered in bond duty paid, applicable excise duty and clearance VAT. See paragraph 3 above for further details.

### **5. COLLECTION OF PURCHASES**

Further to Condition 4(c):

- (a) for any lot lying at Christie's, the buyer shall give twenty-four hours' notice of collection;
- (b) for any lot lying elsewhere, collections shall be from the relevant cellars from which no lot will be released unless the buyer presents a Collection Order issued by Christie's, giving twenty-four hours notice prior to collection.

### **6. GUARANTEE IN RELATION TO WINES AND SPIRITS**

In place of Condition 5 :

- (a) Subject to the obligations accepted by Christie's under this Condition, none of the seller, Christie's, its employees or agents is responsible for the correctness of any statement as to the authorship, origin, date, age, attribution, genuineness or provenance of any lot, for any other error of description or for any fault or defect in any lot and no warranty whatsoever is given by the seller, Christie's, its employees or agents in respect of any lot and any express or implied condition or warranty is hereby excluded;
- (b) if, (1) within twenty-one days of the date of the auction, Christie's has received notice in writing from the buyer of any lot that in his view the lot was at the date of the auction short or ullaged or that any statement of opinion in the catalogue was not well founded, (2) within fourteen days of such notice, Christie's has the lots in its possession in the same condition as at the date of the auction and (3) within a reasonable time thereafter, the buyer satisfies Christie's that the lot was as notified in writing by the buyer (as above) and that the buyer is able to transfer a good and marketable title to the lot free from any lien or encumbrance, Christie's will set aside the sale and refund to the buyer any amount paid by the buyer in respect of the lot provided that the buyer shall have no rights under this Condition if:
  - (i) the defect is mentioned in the catalogue; or
  - (ii) the catalogue description at the date of the auction was in accordance with the then generally accepted opinion of scholars or experts or fairly indicated there to be a conflict of such opinion; or
  - (iii) it can be established that the lot was as notified in writing by the buyer (as above) only by means of a scientific process not generally accepted for use until after the publication of the catalogue or by means of a process which at the date of the auction was unreasonably expensive or impracticable or likely to have caused damage to the lot. (See also notes on ullages and corks);

- (c) the buyer shall not be entitled to claim under this Condition for more than the amount paid by him for the lot and in particular shall have no claim for any loss, consequential loss or damage whether direct or indirect suffered by him;
- (d) the benefit of this guarantee shall not be assignable and shall rest solely and exclusively in the buyer who shall be the person to whom the original invoice was made out by Christie's in respect of the lot when sold and who has since the sale retained uninterrupted, unencumbered ownership thereof.
- (e) Any lots not collected within one month from the date of the collection order, whether or not payment has been made, will be stored at Christie's dedicated warehouse or, at our discretion, at any other place of storage, at a cost of £10 plus VAT per case per calendar month. If the lot remains uncollected for more than 6 months without prior arrangement, we reserve the right to resell the lot on such terms as we shall think fit and to deduct from the net proceeds of sale charges for removal, storage, handling and any other costs incurred, together with all other amounts due to Christie's.

© Christie, Manson & Woods Limited (2007)

# WORLDWIDE SALEROOMS AND OFFICES AND SERVICES

**ARGENTINA**  
**BUENOS AIRES**  
+54 11 43 93 42 22  
Cristina Carlisle

**AUSTRALIA**  
**SYDNEY**  
+61 (0)2 9326 1422  
Ronan Sulich

**AUSTRIA**  
**VIENNA**  
+43 (0)1 533 881214  
Angela Bailou

**BELGIUM**  
**BRUSSELS**  
+32 (0)2 512 88 30  
Roland de Lathuy

**BERMUDA**  
**BERMUDA**  
+1 401 849 9222  
Betsy Ray

**BRAZIL**  
**RIO DE JANEIRO**  
+55 21 2223 6553  
Candida Sodre

**SÃO PAULO**  
+55 11 3061 2576  
Nathalie Lenci

**CANADA**  
**TORONTO**  
+1 416 960 2063  
Brett Sherlock

**CHILE**  
**SANTIAGO**  
+56 2 2 2631642  
Denise Ratnoff  
de Lira

**COLOMBIA**  
**BOGOTA**  
+571 635 54 00  
Juanita Madrinan

**DENMARK**  
**COPENHAGEN**  
+45 3962 2377  
Birgitta Hillingsø  
(Consultant)  
+ 45 2612 0092  
Rikke Juul Brandt  
(Consultant)

**FINLAND AND  
THE BALTIC STATES**  
**HELSINKI**  
+358 40 5837945  
Barbro Schauman  
(Consultant)

**FRANCE**  
**BRITTANY AND  
THE LOIRE VALLEY**  
+33 (0)6 09 44 90 78  
Virginie Gregory  
(Consultant)

**GREATER  
EASTERN FRANCE**  
+33 (0)6 07 16 34 25  
Jean-Louis Janin Daviet  
(Consultant)

**NORD-PAS DE CALAIS**  
+33 (0)6 09 63 21 02  
Jean-Louis Brémits  
(Consultant)

**PARIS**  
+33 (0)1 40 76 85 85

**POITOU-CHARENTE  
AQUITAINE**  
+33 (0)5 56 81 65 47  
Marie-Cécile Moueix

**PROVENCE -  
ALPES CÔTE D'AZUR**  
+33 (0)6 71 99 97 67  
Fabienne Albertini-Cohen

**RHÔNE ALPES**  
+33 (0)6 61 81 82 53  
Dominique Pierron  
(Consultant)

**GERMANY**  
**DÜSSELDORF**  
+49 (0)21 91 59 352  
Arno Verkade

**FRANKFURT**  
+49 (0)173 317 3975  
Anja Schaller (Consultant)

**HAMBURG**  
+49 (0)40 27 94 073  
Christiane Gräfin  
zu Rantau

**MUNICH**  
+49 (0)89 24 20 96 80  
Marie Christine Gräfin Huyn

**STUTTGART**  
+49 (0)71 12 26 96 99  
Eva Susanne  
Schweizer

**INDIA**  
**MUMBAI**  
+91 (22) 2280 7905  
Sonal Singh

**DELHI**  
+91 (0)11 6609 1170  
Sanjay Sharma

**INDONESIA**  
**JAKARTA**  
+62 (0)21 7278 6268  
Charmie Hanami

**ISRAEL**  
**TEL AVIV**  
+972 (0)3 695 0695  
Roni Gilat-Baharaff

**ITALY**  
**MILAN**  
+39 02 303 2831

**ROME**  
+39 06 686 3333  
Marina Cocogna  
**NORTH ITALY**  
+39 348 3131 021  
Paola Gradi  
(Consultant)

**TURIN**  
+39 347 2211 541  
Chiara Massimello  
(Consultant)

**VENICE**  
+39 041 277 0086  
Bianca Arrivabene Valenti  
Gonzaga (Consultant)

**BOLOGNA**  
+39 051 265 154  
Benedetta Possati Vittori  
Veneti (Consultant)

**GENOA**  
+39 010 245 3747  
Rachele Guicciardi  
(Consultant)

**FLORENCE**  
+39 055 219 012  
Alessandra Niccolini di  
Camugliano (Consultant)

**CENTRAL &  
SOUTHERN ITALY**  
+39 348 520 2974  
Alessandra Allaria  
(Consultant)

**JAPAN**  
**TOKYO**  
+81 (0)3 8267 1766  
Chie Banta

**MALAYSIA**  
**KUALA LUMPUR**  
+60 3 6207 9230  
Lim Meng Hong

**MEXICO**  
**MEXICO CITY**  
+52 55 5281 5546  
Gabriela Lobo

**MOMACO**  
+377 97 97 11 00  
Nancy Dotta

**THE NETHERLANDS**  
**-AMSTERDAM**  
+31 (0)20 57 55 255

**NORWAY**  
**OSLO**  
+47 975 800 78  
Katinka Traaseth  
(Consultant)

**PEOPLES REPUBLIC  
OF CHINA**  
**BEIJING**  
+86 (0)10 6572 7900  
Jinqing Cai

**-HONG KONG**  
+852 2760 1766

**-SHANGHAI**  
+86 (0)21 6355 1766  
Gwenn Delamaire

**PORTUGAL**  
**LISBON**  
+351 919 317 233  
Mafalda Pereira Coutinho  
(Consultant)

**RUSSIA**  
**MOSCOW**  
+7 495 937 6364  
+44 20 7389 2318  
Katya Vinokurova

**SINGAPORE**  
+65 6735 1766  
Wen Li Tang

**SOUTH AFRICA**  
**CAPE TOWN**  
+27 (21) 761 2676  
Juliet Lomberg  
(Independent Consultant)

**DURBAN &  
JOHANNESBURG**  
+27 (31) 207 8247  
Gillian Scott-Berning  
(Independent Consultant)

**WESTERN CAPE**  
+27 (44) 533 5178  
Annabelle Conyngham  
(Independent Consultant)

**SOUTH KOREA**  
**SEOUL**  
+82 2 720 5266  
Hye-Kyung Bae

**SPAIN**  
**BARCELONA**  
+34 (0)93 487 8259  
Carmen Schjaer

**MADRID**  
+34 (0)91 532 6626  
Juan Vareiz  
Dalia Padilla

**SWEDEN**  
**STOCKHOLM**  
+46 (0)73 645 2891  
Claire Ahman (Consultant)  
+46 (0)70 9369 201  
Louise Dyhlén (Consultant)

**SWITZERLAND**  
**-GENEVA**  
+41 (0)22 319 1766  
Eveline de Proyart

**-ZURICH**  
+41 (0)44 268 1010  
Dr. Bertold Mueller

**TAIWAN**  
**TAIPEI**  
+886 2 2736 3356  
Ada Ong

**THAILAND**  
**BANGKOK**  
+66 (0)2 652 1097  
Yaovaneer Nirandara  
Punchalee Phenjati

**TURKEY**  
**ISTANBUL**  
+90 (532) 558 7514  
Eda Kehale Argün  
(Consultant)

**UNITED ARAB EMIRATES**  
**-DUBAI**  
+971 (0)4 425 5647

**UNITED KINGDOM**  
**-LONDON,**  
**KING STREET**  
+44 (0)20 7839 9060

**-LONDON,**  
**SOUTH KENSINGTON**  
+44 (0)20 7930 6074

**NORTH AND NORTHEAST**  
+44 (0)20 3219 6010  
Thomas Scott

**NORTHWEST  
AND WALES**  
+44 (0)20 7752 3033  
Jane Blood

**SOUTH**  
+44 (0)1730 814 300  
Mark Wrey

**SCOTLAND**  
+44 (0)131 225 4756  
Bernard Williams  
Robert Lagneau  
David Bowes-Lyon  
(Consultant)

**ISLE OF MAN**  
+44 (0)20 7389 2032

**CHANNEL ISLANDS**  
+44 (0)20 7389 2032

**IRELAND**  
+353 (0)87 638 0996  
Christine Ryall (Consultant)

**UNITED STATES  
CHICAGO**  
+1 312 787 2765  
Lisa Cavanaugh

**DALLAS**  
+1 214 599 0735  
Caperia Ryan

**HOUSTON**  
+1 713 802 0191  
Jessica Phifer

**LOS ANGELES**  
+1 310 385 2600

**MIAMI**  
+1 305 445 1487  
Jessica Katz

**NEWPORT**  
+1 401 849 9222  
Betsy D. Ray

**-NEW YORK**  
+1 212 636 2000  
**SAN FRANCISCO**  
+1 415 982 0982  
Ellanor Notides

**AUCTION SERVICES**  
**CHRISTIE'S AUCTION ESTIMATES**  
Tel: +1 212 492 5495  
Fax: +1 212 636 4930  
www.christies.com

**CORPORATE COLLECTIONS**  
Tel: +1 212 636 2901  
Fax: +1 212 636 4929  
Email: celkies@christies.com

**ESTATES AND APPRAISALS**  
Tel: +1 212 636 2400  
Fax: +1 212 636 2370  
Email: info@christies.com

**MUSEUM SERVICES**  
Tel: +1 212 636 2620  
Fax: +1 212 636 4931  
Email: awhiting@christies.com

**PRIVATE SALES**  
US: +1 212 636 2557  
Fax: +1 212 636 2035

**OTHER SERVICES**  
**CHRISTIE'S EDUCATION**  
Tel: +1 212 355 1501  
Fax: +1 212 355 7370  
Email: christieseducation@christies.com

**Hong Kong**  
Tel: +852 2978 6747  
Fax: +852 2525 3856  
Email: hkcourse@christies.com

**London**  
Tel: +44 (0)20 7665 4350  
Fax: +44 (0)20 7665 4351  
Email: education@christies.com

**Paris**  
Tel: +33 (0)1 42 25 10 90  
Fax: +33 (0)1 42 25 10 91  
Email: ChristiesEducationParis@christies.com

**CHRISTIE'S INTERNATIONAL  
REAL ESTATE**  
**New York**  
Tel: +1 212 468 7182  
Fax: +1 212 468 7141  
Email: info@christiesrealestate.com

**London**  
Tel: +44 (0)20 7389 2551  
Fax: +44 (0)20 7389 2168  
Email: info@christiesrealestate.com

**Hong Kong**  
Tel: +852 2978 6788  
Fax: +852 2845 2646  
Email: info@christiesrealestate.com

**CHRISTIE'S FINE ART  
STORAGE SERVICES**  
**New York**  
+1 212 974 4579  
newyork@cfass.com

**Singapore**  
Tel: +65 6543 5252  
Email: singapore@cfass.com

**CHRISTIE'S REDSTONE**  
Tel: +1 212 974 4500

• DENOTES SALEROOM

ENQUIRIES – Call the Saleroom or Office  
For a complete salerooms & offices listing go to christies.com

EMAIL – info@christies.com

14/06/16

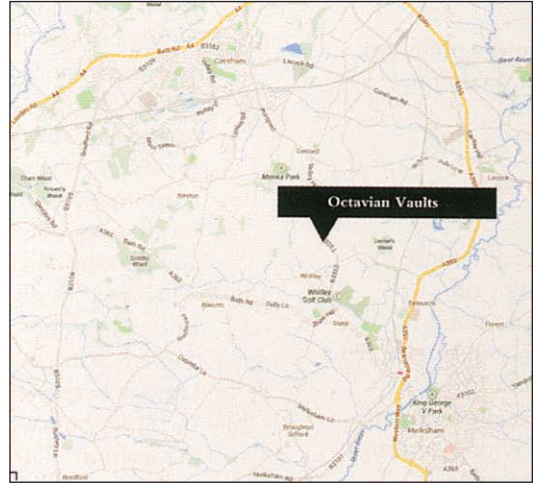
## CHRISTIE'S POST-SALE STORAGE INFORMATION

Christie's does not have its own fine wine storage facility. The majority of our wines are lying at a third party wine storage facility, Octavian Vaults. To obtain your collection/delivery order you may contact Christie's Client Service Centre on +44 (0)20 7839 9060, once payment has been made. Following receipt of your order from Christie's, the wine storage facility will need to be contacted by you to arrange collection/delivery. Please note that free storage is available for a maximum of one month after the sale.

**\* Please allow for up to three working days for the third party wine storage facility to prepare your order unless otherwise informed. **DISCLAIMER:** Please note that Christie's cannot be responsible for any loss or damage to property whilst stored with any third party wine storage facility.**

### Octavian Vaults

Corsham Cellars,  
Eastlays, Gastard,  
Corsham, Wiltshire  
SN13 9PP  
Tel: +44 (0)12 2581 8714  
Email: corshamorders@octavian.co.uk



## OVERSEAS SHIPPING INSTRUCTION FORM

Christie's Art Transport would be delighted to instruct its authorised shipping agents on your behalf and at your expense upon receipt of your completed shipping instructions form. Please print your instructions, sign below and fax back to +44 (0)20 7389 2869 or send to Christie's Cashiers Department, 8 King Street, St. James's, London SW1Y 6QT. **DISCLAIMER: If you choose to use a shipper who is not one of Christie's authorised shipping agents, please note that Christie's cannot be responsible for any loss or damage to the property.**

### PLEASE PRINT CLEARLY

Sale number

---

Lot numbers

---



---



---

Delivery address

---



---



---

Telephone number

---

Fax number

---

Email address

---

Please instruct Connoisseur International Distribution to forward as indicated below

Road  Air  Sea

Please note, quotes are always provided for approval prior to shipping and they exclude local duties and taxes unless stated.

Signature

---

Title Initial(s) Surname

---

# NAUTILUS | 40



## **CELEBRATING 40 YEARS OF THE PATEK PHILIPPE NAUTILUS: 1976-2016**

Christie's international watch department will be featuring a special section of 10 iconic Patek Philippe Nautilus watches for auction in each of its four major venues – Dubai, Geneva, Hong Kong and New York from October to December.

### **IMPORTANT WATCHES INCLUDING NAUTILUS 40 AUCTIONS**

Part I, Dubai 19 October

Part II, Geneva 14 November

Part III, Hong Kong 28 November

Part IV, New York 6 December

### **CONTACT**

John Reardon

International Head of Watches

[jreardon@christies.com](mailto:jreardon@christies.com)

+1 212 636 2320



# CHRISTIE'S

**156TH HOSPICES DE BEAUNE  
WINE AUCTION**

*Beaune, 20 November 2016*

**CONTACT**

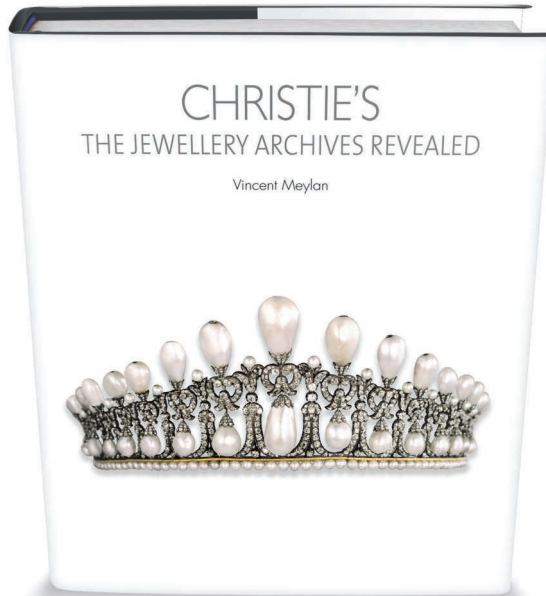
Armand Fouré  
arfoure@christies.com  
+33 (0) 1 40 76 72 42



**CHRISTIE'S**

# CHRISTIE'S

## THE JEWELLERY ARCHIVES REVEALED



For centuries, the stories of the world's great jewellery collections have lain hidden within the archives of Christie's. From European royalty to Hollywood royalty the vaults sparkle with the most celebrated (and occasionally notorious) names of the last 250 years.

Each sale had its intrigue, each its story to tell. All are revealed here, as well as the most famous pearls and diamonds in the world; each explored within the context of their owners' remarkable lives.

This spectacular book is available to order now.

### ACC ART BOOKS

Beautifully Illustrated Publications

This book is available to order now direct from the  
publisher's website or by telephone

Tel +44 (0)1394 389950

Email: [info@antique-acc.com](mailto:info@antique-acc.com)

[www.accpublishinggroup.com](http://www.accpublishinggroup.com)



**FINEST AND RAREST WINES FEATURING  
A SUPERB COLLECTION OF BURGUNDY,  
RHONE AND CHAMPAGNE**

**THURSDAY 10 NOVEMBER 2016**

**AT 10.30 AM, LOTS 1-370**

8 King Street, St. James's, London SW1Y 6QT

**CODE NAME: TAIN**

**SALE NUMBER: 12234**

(Dealers billing name and address must agree with tax exemption certificate. Invoices cannot be changed after they have been printed.)

**BID ONLINE FOR THIS SALE AT CHRISTIES.COM**

**ALL BIDS MUST BE RECEIVED NO LESS  
THAN 24 HOURS PRIOR TO THE SALE**

Christie's are requested, without legal obligation of any kind, to bid on the following lots up to the price stated. I understand that if my bid is successful the purchase price payable shall be the aggregate of the final bid and a premium of 17.5% of the final bid for Wine and Cigars (together with any V.A.T. chargeable on the final bid and such premium) —Additional Conditions of Sale.

Lots will be bought below the specified maximum whenever possible.

V.A.T. will be added to invoices where applicable.

All bids shall be treated as offers made on the Notes and Conditions of Sale printed in the catalogue.

To ensure that bids will be accepted and that delivery of Lots is not delayed, intending buyers should supply bank or other suitable references to Christie's.

The references should be supplied in good time to be taken up before the sale.

There is a Buyer's Premium of 17.5% on Wine and Cigar sales at Christie's.

The estimates in this catalogue are the approximate prices we expect to be realised. They are not definitive. They are prepared well in advance of the sale and are subject to revision in the light of unforeseen market changes.

**WRITTEN BIDS FORM CHRISTIE'S LONDON**

**ABSENTEE BIDS MUST BE RECEIVED AT LEAST 24 HOURS BEFORE THE AUCTION BEGINS.**

**CHRISTIE'S WILL CONFIRM ALL BIDS RECEIVED BY FAX BY RETURN FAX. IF YOU HAVE NOT RECEIVED CONFIRMATION WITHIN ONE BUSINESS DAY, PLEASE CONTACT THE BID DEPARTMENT.**

**TEL: +44 (0)20 7389 2658 FAX: +44 (0)20 7930 8870 ON-LINE WWW.CHRISTIES.COM**

**12234**

Client Number (if applicable) Sale Number

Billing Name (please print)

Address

Postcode

Daytime Telephone Evening Telephone

Fax (Important) E-mail

Please tick if you prefer not to receive information about our upcoming sales by e-mail

Signature

If you have not previously bid or consigned with Christie's, please attach copies of the following documents. Individuals: government-issued photo identification (such as a photo driving licence, national identity card, or passport) and, if not shown on the ID document, proof of current address, for example a utility bill or bank statement. Corporate clients: a certificate of incorporation. Other business structures such as trusts, offshore companies or partnerships: please contact the Credit Department at + 44 (0)20 7752 3137 for advice on the information you should supply. If you are registering to bid on behalf of someone who has not previously bid or consigned with Christie's, please attach identification documents for yourself as well as the party on whose behalf you are bidding, together with a signed letter of authorisation from that party. New clients, clients who have not made a purchase from any Christie's office within the last two years, and those wishing to spend more than on previous occasions may be asked to supply a bank reference. We also request that you complete the section below with your bank details:

Name of Bank(s)

Address of Bank(s)

Account Number(s)

Name of Account Officer(s)

Bank Telephone Number

**PLEASE PRINT CLEARLY**

Lot number (in numerical order)	Number of Lots required	Maximum Bid <b>UK£</b> per lot (excluding buyer's premium)

**I require my purchases In Bond  Duty-Paid**

**(where no option is stated, wines will be purchased duty-paid)**

If you are registered within the European Community for VAT/IVA/TVA/BTW/MWST/MOMS Please quote number below:

Lot numbers (in numerical order)	Number of Lots Required	Maximum Bid <b>UK£</b> per lot (excluding buyer's premium)	Lot numbers (in numerical order)	Number of Lots Required	Maximum Bid <b>UK£</b> per lot (excluding buyer's premium)

# CHRISTIE'S

## CHRISTIE'S INTERNATIONAL PLC

Patricia Barbizet, Chairwoman and CEO  
Jussi Pylkkänen, Global President  
Stephen Brooks, Deputy CEO  
Loïc Brivezac, Gilles Eruilin, Gilles Pagniez,  
Héloïse Temple-Boyer,  
Sophie Carter, Company Secretary

## CHRISTIE'S EXECUTIVE

Patricia Barbizet, Chairwoman and CEO  
Jussi Pylkkänen, Global President  
Stephen Brooks, Deputy CEO

## INTERNATIONAL CHAIRMEN

François Curiel, Chairman, Asia Pacific  
Stephen Lash, Chairman Emeritus, Americas  
Viscount Linley, Honorary Chairman, EMERI  
Charles Cator, Deputy Chairman, Christie's Int.  
Xin Li, Deputy Chairwoman, Christie's Int.

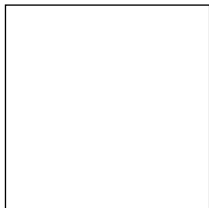
## CHRISTIE'S EMERI

## SENIOR DIRECTORS

Mariolina Bassetti, Giovanna Bertazzoni,  
Edouard Boccon-Gibod, Prof. Dr. Dirk Boll,  
Olivier Camu, Guillaume Cerutti, President,  
Roland de Lathuy, Eveline de Proyart,  
Roni Gilat-Baharaff, Francis Outred,  
Christiane Rantzau, Andreas Rumbler,  
François de Ricqlès, Jop Ubbens, Juan Vareiz

## ADVISORY BOARD

Pedro Girao, Chairman,  
Patricia Barbizet, Arpad Busson, Loula Chandris,  
Kemal Has Cingilloglu, Ginevra Elkann,  
I. D. Fürstin zu Fürstenberg, Laurence Graff,  
H.R.H. Prince Pavlos of Greece,  
Marquesa de Bellavista Mrs Alicia Koplowitz,  
Viscount Linley, Robert Manoukian,  
Rosita, Duchess of Marlborough,  
Countess Daniela Memmo d'Amelio,  
Usha Mittal, Çiğdem Simavi



## CHRISTIE'S UK

### CHAIRMAN'S OFFICE

Orlando Rock, Chairman  
Noël Annesley, Honorary Chairman;  
Richard Roundell, Vice Chairman;  
Robert Copley, Deputy Chairman;  
The Earl of Halifax, Deputy Chairman;  
Francis Russell, Deputy Chairman;  
Julia Delves Broughton, James Hervey-Bathurst,  
Amin Jaffer, Nicholas White, Mark Wrey

### SENIOR DIRECTORS

Simon Andrews, Jeremy Bentley, Ellen Berkeley,  
Jill Berry, Peter Brown, James Bruce-  
Gardyne, Sophie Carter, Benjamin Clark,  
Christopher Clayton-Jones, Karen Cole,  
Paul Cutts, Isabelle de La Bruyere, Leila de Vos,  
Paul Dickinson, Harriet Drummond,  
Julie Edelson, Hugh Edmeades, David Elswood,  
David Findlay, Margaret Ford, Edmond Francey,  
Daniel Gallen, Karen Harkness, Philip Harley,  
James Hastie, Karl Hermanns, Paul Hewitt,  
Rachel Hidderley, Mark Hinton, Nick Hough,  
Michael Jeha, Donald Johnston,  
Erem Kassim-Lakha, Nicholas Lambourn,  
William Lorimer, Catherine Manson,  
Nic McElhatton (Chairman, South Kensington),  
Alexandra McMorrow, Jeremy Morrison,  
Nicholas Orchard, Clarice Pecori-Giraldi,  
Benjamin Peronnet, Henry Pettifer, Steve Phipps,  
Will Porter, Paul Reason, Tara Rastrick,  
Amjad Rauf, William Robinson, Tim Schmelcher,  
John Stainton, Alexis de Tiesenhausen,  
Lynne Turner, Jay Vincze, Andrew Ward,  
David Warren, Andrew Waters, Harry Williams-  
Bulkeley, Martin Wilson, André Zlattinger

### DIRECTORS

Zoe Ainscough, Cristian Albu, Marco Almeida,  
Maddie Amos, Katharine Arnold, Alexis Ashot,  
Alexandra Baker, Karl Barry, Sven Becker,  
Jane Blood, Piers Boothman,  
David Bowes-Lyon, Louise Broadhurst,  
Lucy Brown, Robert Brown, Lucy Campbell,  
Jason Carey, Sarah Charles, Romilly Collins,  
Ruth Cornett, Nicky Crosbie,  
Armelle de Laubier-Rhally, Eugenio Donadoni,  
Sophie DuCret, Christopher O'Neil-Dunne,  
Anna Evans, Arne Everwijn, Adele Falconer,  
Nick Finch, Emily Fisher, Peter Flory,  
Elizabeth Floyd, Nina Foote, Christopher Forrest,  
Giles Forster, Zita Gibson, Alexandra Gill,  
Keith Gill, Leonie Grainger, Simon Green,  
David Gregory, Mathilde Heaton,  
Annabel Hesketh, Sydney Hornsby,  
Peter Horwood, Kate Hunt, Simon James,  
Sabine Kegel, Hans-Peter Keller, Tjabel Klok,  
Robert Lagneau, Joanna Langston, Tina Law,  
Adriana Leese, Tom Legh, Brandon Lindberg,  
Laura Lindsay, David Llewellyn,  
Murray Macaulay, Graeme Maddison,  
Sarah Mansfield, Nicolas Martineau,

Roger Massey, Joy McCall, Neil McCutcheon,  
Michelle McMullan, Daniel McPherson,  
Neil Millen, Jeremy Morgan, Leonie Moschner,  
Giles Mountain, Chris Munro, Liberté Nuti,  
Beatriz Ordoñas, Rosalind Patient, Anthea Peers,  
Keith Penton, Romain Pingannaud,  
Sara Plumbly, Anne Qaimmaqami,  
Marcus Rådecke, Pedram Rasti, Lisa Redpath,  
Sumiko Roberts, Sandra Romito, Tom Rooth,  
Alice de Roquemaurel, Francois Rothlisberger,  
Patrick Saich, Rosemary Scott, Tom Scott,  
Nigel Shorthouse, Dominic Simpson, Nick Sims,  
Clementine Sinclair, Sonal Singh, Katie Siveyer,  
Nicola Steel, Kay Sutton, Cornelia Svedman,  
Rakhi Talwar, Thomas Venning, Edwin Vos,  
Amelia Walker, Rosanna Widen, Ben Wiggins,  
Sophie Wiles, Bernard Williams,  
Georgina Wilsenach, Toby Woolley, Geoff Young

### ASSOCIATE DIRECTORS

Guy Agazarian, Ksenia Apukhtina, Fiona Baker,  
Carin Baur, Sarah Boswell, Mark Bowis,  
Phill Brakefield, Clare Bramwell, Jenny Brown,  
David Cassidy, Marie-Louise Chaldecott,  
John Crook, Helen Culver Smith,  
Laetitia Delaloye, Charlotte Delaney,  
Milo Dickinson, Freddie De Rougemont,  
Grant Deudney, Howard Dixon, Virginie Dulucq,  
David Ellis, Antonia Essex, Kate Flitcroft,  
Eva French, Pat Galligan, Elisa Galuppi,  
Julia Grant, Pippa Green, Angus Granlund,  
Christine Haines, Coral Hall, Charlotte Hart,  
Daniel Hawkins, Evelyn Heathcoat Amory,  
Anke Held, Valerie Hess, Carolyn Holmes,  
Amy Huitson, Adrian Hume-Sayer, James Hyslop,  
Helena Ingham, Pippa Jacomb, Guary Kelly,  
Hala Khayat, Alexandra Kindermann,  
Julia Kiss, Polly Knewstubb, Mark Henry Lampé,  
Aoife Leach, Rob Leatham, Antoine Leboutteiller,  
Timothy Lloyd, Peter Mansell,  
Stephanie Manstein, Amparo Martinez Rusotto,  
Astrid Mascher, Georgie Mawby,  
David McLachlan, Lynda McLeod,  
Kateryna Merkalkenko, Toby Monk,  
Rosie O'Connor, Samuel Pedder-Smith,  
Christopher Petre, Louise Phelps, Eugene Pooley,  
Sarah Rancans, David Rees, Alexandra Reid,  
Sarah Reynolds, Meghan Russell, Pat Savage,  
Julie Schutz, Hannah Schweiger, Angus Scott,  
Ben Slinger, James Smith, Graham Smithson,  
Mark Stephen, Annelies Stevens,  
Charlotte Stewart, Dean Stimpson,  
Gemma Sudlow, Dominique Suiveng,  
Keith Tabley, Iain Tarling, Sarah Tennant,  
Timothy Triptree, Lucia Tro Santafe,  
Flora Turnbull, Paul van den Biesen,  
Mieke Van Embden, Ben Van Rensburg,  
Lisa Varsani, Shanthi Veigas, Julie Vial,  
Assunta Grafina von Moy, Anastasia von Seibold,  
Zelie Walker, Tony Walshe, Gillian Ward,  
Chris White, Annette Wilson, Julian Wilson,  
Miriam Winsor-Alio, Elissa Wood,  
Suzanne Yalcin-Pennings, Charlotte Young



CHRISTIE'S

8 KING STREET ST. JAMES'S LONDON SW1Y 6QT